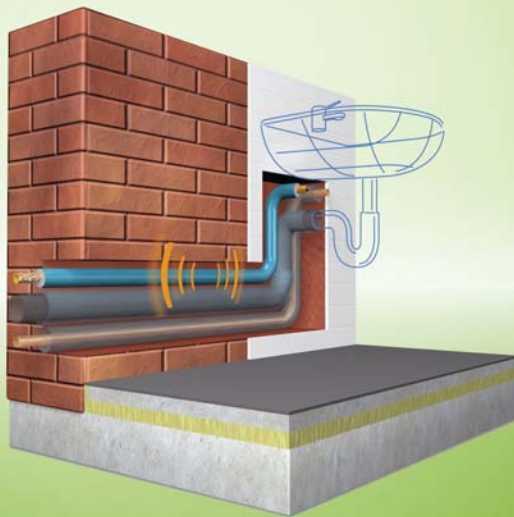


Tubolit® S Plus

THE PROTECTIVE TUBE FOR IN-WALL
INSTALLATIONS WITH LIMITED SPACE



- Optimized insulation thickness for installations in reduced in wall spaces
- Flexible and easy to sleeve with extra inner-foil lining
- Durable outer PE-film for additional protection
- Reduce structure borne sound

Technical Data - Tubolit S Plus

Brief description	Flexible, closed-cell extruded insulation material to reduce heat losses and noise on heating and plumbing installations.
Material type	Foam material based on polyethylene. Factory made polyethylene foam (PEF) according to EN 14313.
Colour	foam: grey; foil: blue
Applications	Insulation / protection of pipes (heating system pipes, domestic hot and cold water pipes) and other parts of heating and plumbing installations (incl. elbows, fittings, flanges, etc).
Special Features	Foil coating on outer surface for additional protection of insulation surface. Foil coating on inner surface for better sleeve-on installation.
Remarks	After installation linear shrinkage of approx. 2% (or more in particular cases) may occur during the initial and even later phase of system operation. Under certain conditions (e.g. high humidity, main distribution pipes, pipes with constant or almost constant flow) cold water pipelines must be insulated with Armaflex, just the same as chilled water pipes in air-conditioning systems. Declaration of Performance is available in accordance with Article 7(3) of Regulation (EU) No 305/2011 on our homepage: www.armacell.com/DoP

Property	Value/Assessment	Test ¹	Special Remarks
Temperature Range			
Temperature Range	Max. service temperature	+ 100 °C	(+ 85 °C for tapes)
	Min. service temperature		(as is usual in plumbing and heating installations)
Thermal Conductivity			
Thermal Conductivity ¹	ϑ_m	40	[°C]
	Tubolit S Plus	$\lambda \leq 0.045$	W/(m · K)
			$[41 + 0.1 \cdot \vartheta_m + 0.0008 \cdot (\vartheta_m - 40)^2] / 1000$
Fire performance			
Reaction to fire ²	Tubolit S Plus	E	
Other technical features			
Dimensions and tolerances	In accordance with EN 14313, table 1 and 2	EU 5676	Tested acc. to EN 822 EN 823 EN 13467

1. In accordance with testing methods and laboratory equipment, the thermal conductivity for Tubolit, S, S Plus and tape is measured in the conventional way

2. The building materials classification is valid on metal or solid, mineral surfaces.

*1 Further documents such as test certificates and approvals can be requested using the registration number given.

All statements and technical information are based on results obtained under typical conditions. It is the responsibility of the recipient to verify with us that the information is appropriate for the specific use intended. Installation instructions are available. Please consult our Technical Department before insulating stainless steel.

Tubolit S Plus tubes endless



Length 20.0 m, Colour Grey, Covering Colour Blue, with robust protective film on outside plus transparent inner film for fast and easy application

Pipe max. Outside-Ø [mm]	4,0 mm insulation thickness		
	Code	m/carton	Rolls/carton
15	TL-12-15/4-S+ ●	520	26
18	TL-18/4-S+ ●	440	22
22	TL-22/4-S+ ●	400	20
28	TL-28/4-S+ ●	320	16
30	TL-30/4-S+ ●	320	16
35	TL-35/4-S+ ●	280	14
42	TL-42/4-S+ ●	240	12

● Not a stock item. Delivery on request.