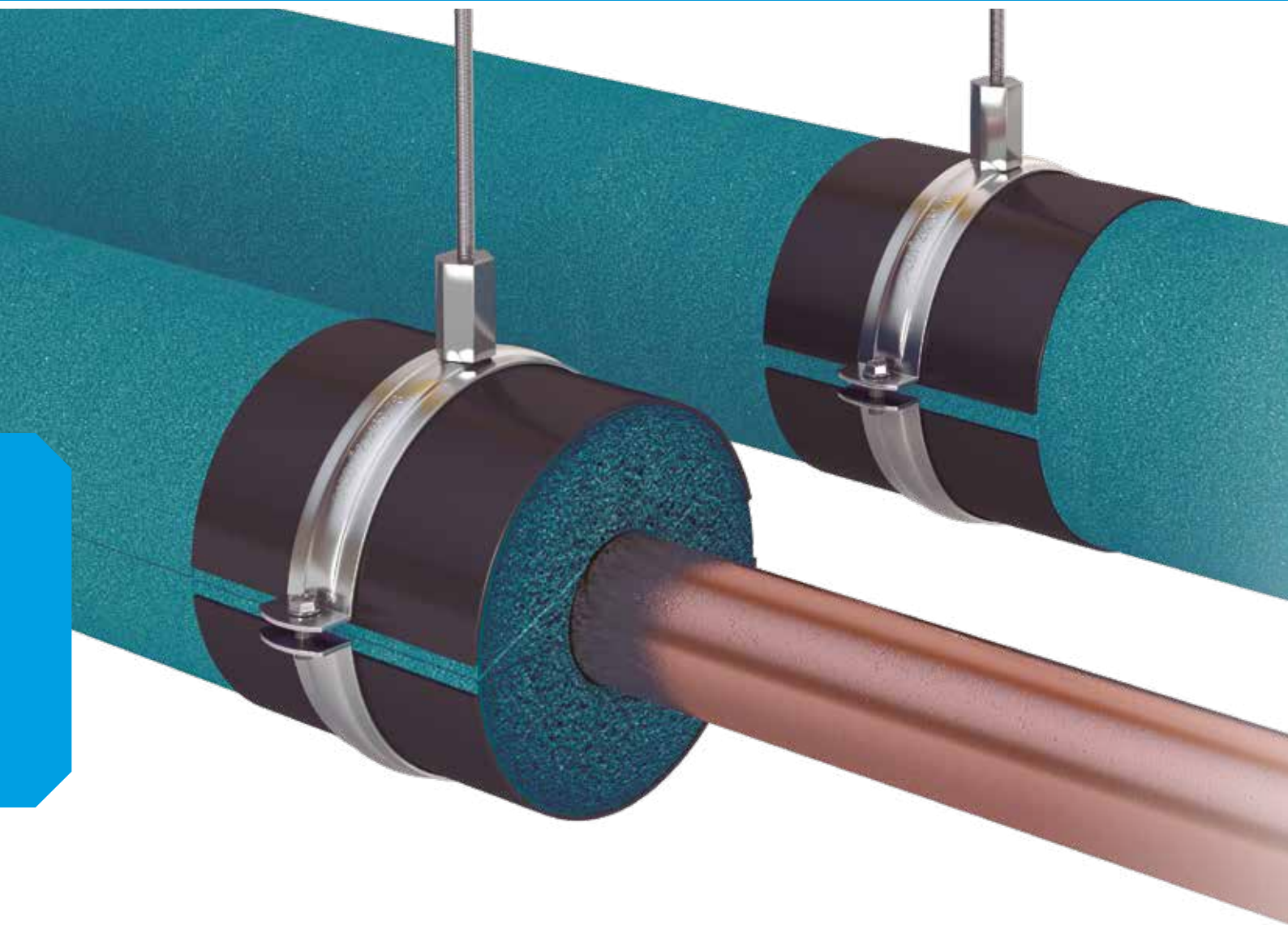


# ArmaFix Ultima<sup>®</sup>



## COMPATIBLE PIPE SUPPORTS FOR USE WITH ARMAFLEX ULTIMA LOW SMOKE INSULATION

- Environmentally friendly PET core, with greater load capacity.
- Increased fire safety thanks to low smoke emission
- Prevents thermal bridges and reduction of energy losses
- Very good mechanical resistance
- Compatible with ArmaFlex Ultima tubes

RANGE

## PIPE SUPPORTS & CLAMPS



## RECOMMENDED PRODUCTS

For a complete installation



ArmaFlex Ultima tube



ArmaFlex Ultima 700 adhesive



ArmaFlex Ultima RS850 adhesive

## TECHNICAL DATA

Pipe and duct supports for refrigeration and air conditioning installations to prevent condensation at fixing points. Thermally non-interacting single piece, with 2 ArmaFORM PET-foam sections with self-adhesive closure. All dimensions correspond to the ArmaFlex Ultima tube and sheet range.

<b>Material type</b>	PET foam bearing segments, embedded in and glued to ArmaFlex Ultima elastomeric foam material. Outside bearing shell made of painted 0.8mm thick aluminium sheeting, which simultaneously serves as a vapour barrier for the PET bearing segments.
<b>Colour</b>	Blue
<b>Material information</b>	Traces of silicone can be found on the protective film used on the self-adhesive closures. Please contact customer services for details.
<b>Applications</b>	Thermally non-interacting mounting aid for tubes and sheet in refrigeration and air-conditioning applications, which are to be insulated with ArmaFlex Ultima.
<b>Remarks</b>	When used in applications with intermittent temperatures, thermal length extensions may cause inherent pressure in the installation; this needs to be considered in the overall insulation construction.

Property	Value/Assessment	Standards & Remarks
<b>Temperature Range</b>		
Max service temperature	+110 °C	
Min service temperature	-50 °C (for temperatures below -50 °C please contact our technical department)	
<b>Thermal Conductivity</b>		
	Same as ArmaFlex Ultima elastomeric foam	Declared acc. to EN ISO 13787 Tested acc. to EN12667 & EN ISO 8497
<b>Water Vapour Diffusion Resistance</b>		
	Same as ArmaFlex Ultima elastomeric foam	Tested acc. to EN 12086 & EN 13469
<b>Fire Performance</b>		
Reaction to fire	<b>COMPLETE SYSTEM INSTALLATION:</b> Installed with ArmaFlex Ultima tubes <b>B<sub>L</sub>s1,d0</b> Installed with ArmaFlex Ultima sheet <b>Bs2,d0</b>	Classified acc. to EN 13501-1 Tested acc. to EN 13823 & EN ISO 11925-2
Practical fire behaviour	Self-extinguishing, does not drip & does not spread flames.	
<b>Acoustic Performance</b>		
Reduction of structure-borne sound transmission	According to insulation material used	According to DIN 4109
<b>Other technical features</b>		
Density	95 - 105 kg/m <sup>3</sup> (pipe bearing segments)	
Storage & shelf life	Products with self-adhesive closures to be installed within 1 year	

<b>ArmaFix clamps</b>	
<b>Description</b>	Pipe clamp with quick release closing and combination mounting nut
<b>Material type</b>	Steel with an electrolytic zinc coating to protect from corrosion.
<b>Colour</b>	Silver
<b>Material information</b>	Clamp supplied with combination nut for fixing to threaded rod.
<b>Applications</b>	For use alongside ArmaFlex insulation at pipe hanging points to eliminate thermal bridging on refrigeration and air-conditioning installations.
<b>Fire Performance</b>	The insulation layer does not affect the fire performance of the steel clamp
<b>Screw connections</b>	M8 / M10 combination nut
<b>Tension screws</b>	M6 / M8
<b>Clamp</b>	Width 20mm - 30mm, Thickness 1.5mm - 3mm

## PIPE SUPPORTS AND CLAMPS



Pipe max. Outside - Ø (mm)	Max permissible distance (m)	13mm INSULATION THICKNESS			CLAMPS13mm		
		Code	Pieces/carton		Code	Pieces/carton	
10	2	ULP13(9)-10/12 •	32		PCX 025/030	25	
12	2	ULP13(9)-10/12 •	32		PCX 025/030	25	
15	2	ULP13(9)-15/18 •	32		PCX 033/037	25	
18	2	ULP13(9)-15/18 •	32		PCX 033/037	25	
22	2.75	ULP13(9)-22/25 •	32		PCX 042/046	25	
25	2.75	ULP13(9)-22/25 •	32		PCX 042/046	25	
28	3	ULP13(9)-28/30 •	32		PCX 047/052	25	
30	3	ULP13(9)-28/30 •	32		PCX 047/052	25	
35	3.5	ULP13(9)-35/28 •	28		PCX 054/058	25	
38	3.5	ULP13(9)-35/38 •	28		PCX 054/058	25	
42	3.75	ULP13(9)-42/45 •	28		PCX 063/068	25	
45	3.75	ULP13(9)-42/45 •	28		PCX 063/068	25	
48	4.25	ULP13(9)-48 •	28		PCX 068/073	10	
54	4.25	ULP13(9)-54/57 •	28		PCX 068/073	10	
57	4.25	ULP13(9)-54/57 •	28		PCX 068/073	10	
60	4.75	ULP13(9)-60/64 •	24		PCX 082/085	10	
64	4.75	ULP13(9)-60/64 •	24		PCX 082/085	10	
76	5.50	ULP13(9)-76/80 •	20		PCX 092/099	10	
80	5.50	ULP13(9)-76/80 •	20		PCX 092/099	10	
89	6	ULP13(9)-89 •	16		PCX 108/112	10	

## Other information

- Not a stock item

Pipe max. Outside - Ø (mm)	Max permissible distance (m)	19mm INSULATION THICKNESS			CLAMPS 19mm		
		Code	Pieces/carton		Code	Pieces/carton	
10	2	ULP19-10/12 •	28		PCX 038/041	25	
12	2	ULP19-10/12 •	28		PCX 038/041	25	
15	2	ULP19-15/18 •	28		PCX 047/052	25	
18	2	ULP19-15/18 •	28		PCX 047/052	25	
22	2.75	ULP19-22/25 •	28		PCX 054/058	25	
25	2.75	ULP19-25/25 •	28		PCX 054/058	25	
28	3	ULP19-28/30 •	28		PCX 059/063	25	
30	3	ULP19-28/30 •	28		PCX 059/063	25	
35	3.5	ULP19-35/28 •	24		PCX 063/068	25	
38	3.5	ULP19-35/38 •	24		PCX 063/068	25	
42	3.75	ULP19-42/45 •	24		PCX 068/073	10	
45	3.75	ULP19-42/45 •	24		PCX 068/073	10	
48	4.25	ULP19-48 •	24		PCX 072/080	10	
54	4.25	ULP19-54/57 •	24		PCX 082/085	10	
57	4.25	ULP19-54/57 •	24		PCX 082/085	10	
60	4.75	ULP19-60/64 •	20		PCX 088/092	10	
64	4.75	ULP19-60/64 •	20		PCX 088/092	10	
76	5.50	ULP19-76/80 •	16		PCX 099/103	10	
80	5.50	ULP19-76/80 •	16		PCX 099/103	10	
89	6	ULP19-89 •	12		PCX 112/118	10	

Pipe max. Outside - Ø (mm)	Max permissible distance (m)	25mm INSULATION THICKNESS			CLAMPS 25mm		
		Code	Pieces/carton		Code	Pieces/carton	
15	2	ULP25-15/18 •	28		PCX 059/063	25	
18	2	ULP25-15/18 •	28		PCX 059/063	25	
22	2.75	ULP25-22/25 •	28		PCX 063/068	25	
25	2.75	ULP25-25/25 •	28		PCX 063/068	25	
28	3	ULP25-28/30 •	28		PCX 068/073	10	
30	3	ULP25-28/30 •	28		PCX 068/073	10	
35	3.5	ULP25-35/28 •	24		PCX 072/080	10	
38	3.5	ULP25-35/38 •	24		PCX 072/080	10	
42	3.75	ULP25-42/45 •	24		PCX 082/085	10	
45	3.75	ULP25-42/45 •	24		PCX 082/085	10	
48	4.25	ULP25-48 •	24		PCX 088/092	10	
54	4.25	ULP25-54/57 •	24		PCX 092/099	10	
57	4.25	ULP25-54/57 •	24		PCX 092/099	10	
60	4.75	ULP25-60/64 •	20		PCX 099/103	10	
64	4.75	ULP25-60/64 •	20		PCX 099/103	10	
76	5.50	ULP25-76/80 •	16		PCX112/118	10	
80	5.50	ULP25-76/80 •	16		PCX112/118	10	
89	6	ULP25-89 •	12		PCX137/142	10	

**Other information**

- Not a stock item