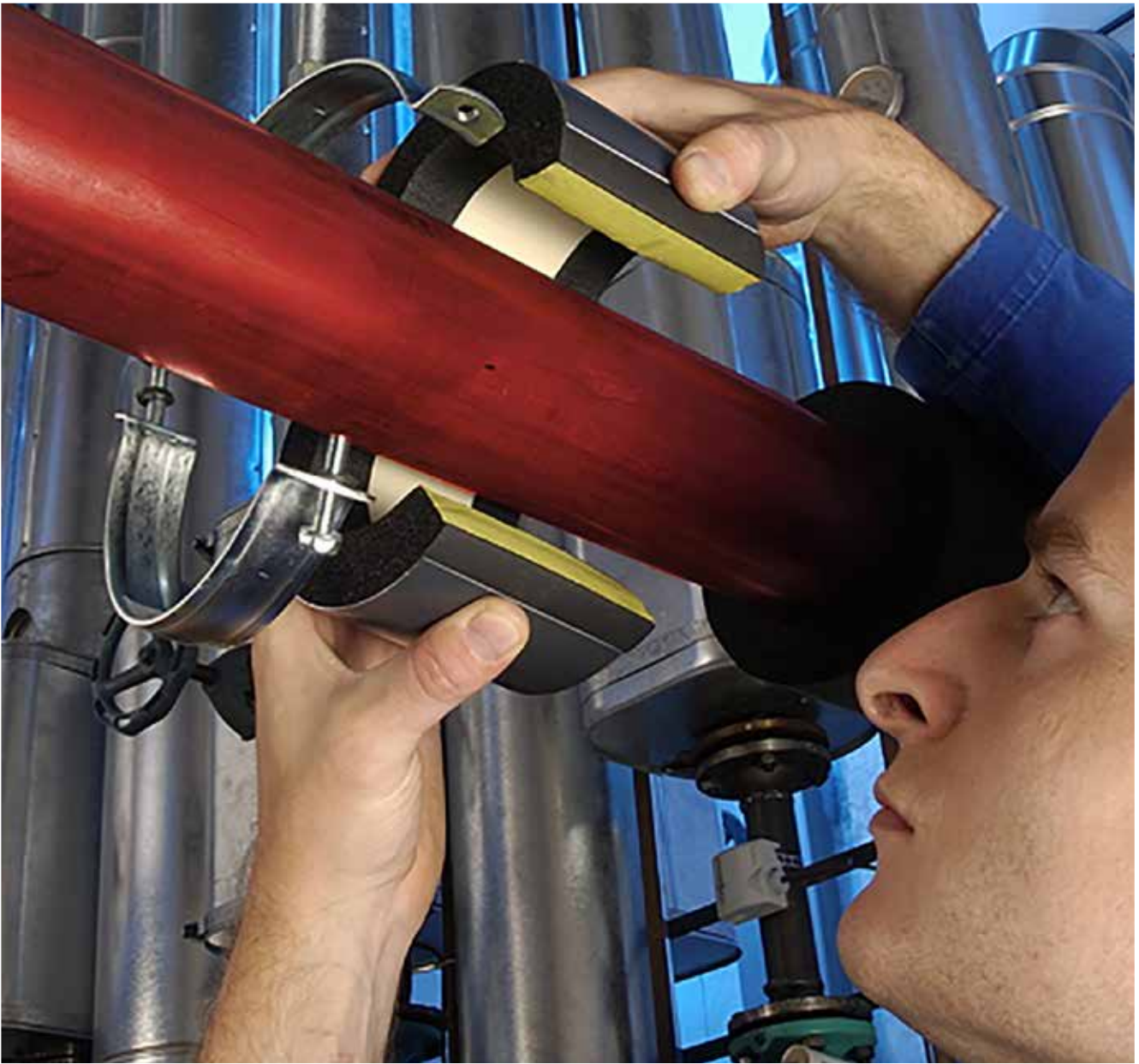


# ArmaFix NH<sup>®</sup>



## COMPATIBLE PIPE SUPPORTS FOR USE WITH NH/ARMAFLEX INSULATION

- Environmentally friendly PET core, with greater load capacity
- Increased fire safety thanks to non-halogen material
- Prevents thermal bridges and reduction of energy losses
- Very good mechanical resistance
- Compatible with NH/ArmaFlex tubes



RANGE

## PIPE SUPPORTS & CLAMPS



## RECOMMENDED PRODUCTS

For a complete installation



ArmaFlex 520 adhesive



ArmaFlex RS850 adhesive



NH/ArmaFlex tubes

## TECHNICAL DATA

Insulated pipe and duct supports to prevent condensation at fixing points on refrigeration and air conditioning installations. Single piece assembly with 2 ArmaFORM PET-foam sections and self-adhesive closure. All dimensions correspond to the NH/ArmaFlex tube range.

<b>Material type</b>	PET foam bearing segments, embedded in and glued to NH/ArmaFlex elastomeric foam material. Outside bearing shell made of painted 0.8mm thick aluminium sheeting, which simultaneously serves as a vapour barrier for the PET bearing segments.
<b>Colour</b>	Dark grey
<b>Material information</b>	Traces of silicone can be found on the protective film used on the self-adhesive closures. Please contact customer services for details.
<b>Applications</b>	Thermally non-interacting mounting aid for tubes and sheet in refrigeration and air-conditioning applications, which are to be insulated with NH/ArmaFlex.
<b>Remarks</b>	When used in applications with intermittent temperatures, thermal length extensions may cause inherent pressure in the installation; this needs to be considered in the overall insulation construction.

Property	Value/Assessment	Standards & Remarks
<b>Temperature Range</b>		
Max service temperature	+110 °C	
Min service temperature	-50 °C (for temperatures below -50 °C please contact our technical department)	
<b>Thermal Conductivity</b>		
	Same as NH/ArmaFlex elastomeric foam	Declared acc. to EN ISO 13787 Tested acc. to EN12667 & EN ISO 8497
<b>Water Vapour Diffusion Resistance</b>		
	Same as NH/ArmaFlex elastomeric foam	Tested acc. to EN 12086 & EN 13469
<b>Fire Performance</b>		
Reaction to fire	Same as NH/ArmaFlex <b>ENTIRE SYSTEM INSALLATION:</b> Installed with NH/ArmaFlex D <sub>1</sub> s2,d0	Classified acc. to EN 13501-1 Tested acc. to EN 13823 & EN ISO 11925-2
Practical fire behaviour	Self-extinguishing, does not drip & does not spread flames.	
<b>Acoustic Performance</b>		
Reduction of structure-borne sound transmission	According to insulation material used	According to DIN 4109
<b>Other technical features</b>		
Density	95 - 105 kg/m <sup>3</sup> (pipe bearing segments)	
Storage & shelf life	Products with self-adhesive closures to be installed within 1 year	

<b>ArmaFix clamps</b>		
<b>Description</b>	Pipe clamp with quick release closing and combination mounting nut	
<b>Material type</b>	Steel with an electrolytic zinc coating to protect from corrosion.	
<b>Colour</b>	Silver	
<b>Material information</b>	Clamp supplied with combination nut for fixing to threaded rod.	
<b>Applications</b>	For use alongside ArmaFlex insulation at pipe hanging points to eliminate thermal bridging on refrigeration and air-conditioning installations.	
<b>Fire Performance</b>	The insulation layer does not affect the fire performance of the steel clamp	
<b>Screw connections</b>	M8 / M10 combination nut	
<b>Tension screws</b>	M6 / M8	
<b>Clamp</b>	Width 20mm - 30mm, Thickness 1.5mm - 3mm	

## PIPE SUPPORTS AND CLAMPS



Pipe max. Outside - Ø (mm)	Max permissible distance (m)	13mm INSULATION THICKNESS			CLAMPS 13mm		
		Code	Pieces/carton		Code	Pieces/carton	
10	2	PHN-13-10/12 •	32		PCX 025/030	25	
12	2	PHN-13-10/12 •	32		PCX 025/030	25	
15	2	PHN-13-15/18 •	32		PCX 033/037	25	
18	2	PHN-13-15/18 •	32		PCX 033/037	25	
22	2.75	PHN-13-22/25 •	32		PCX 042/046	25	
25	2.75	PHN-13-22/25 •	32		PCX 042/046	25	
28	3	PHN-13-28/30 •	32		PCX 047/052	25	
30	3	PHN-13-28/30 •	32		PCX 047/052	25	
32	3.5	PHN-13-32 •	28		PCX 047/052	25	
35	3.5	PHN-13-35/38 •	28		PCX 054/058	25	
38	3.5	PHN-13-35/38 •	28		PCX 054/058	25	
40	3.75	PHN-13-40 •	28		PCX 059/063	25	
42	3.75	PHN-13-42/45 •	28		PCX 063/068	25	
45	3.75	PHN-13-42/45 •	28		PCX 063/068	25	
48	4.25	PHN-13-48 •	28		PCX 068/073	10	
54	4.25	PHN-13-54/57 •	28		PCX 068/073	10	
57	4.25	PHN-13-54/57 •	28		PCX 068/073	10	
60	4.75	PHN-13-60/64 •	24		PCX 082/085	10	
64	4.75	PHN-13-60/64 •	24		PCX 082/085	10	
76	5.50	PHN-13-76/80 •	20		PCX 092/099	10	
80	5.50	PHN-13-76/80 •	20		PCX 092/099	10	
89	6.00	PHN-13-89 •	16		PCX 108/112	10	

## Other information

- Not a stock item

Pipe max. Outside - Ø (mm)	Max permissible distance (m)	19mm INSULATION THICKNESS			CLAMPS 19mm		
		Code	Pieces/carton		Code	Pieces/carton	
10	2	PHN-19-10/12 •	28		PCX 038/041	25	
12	2	PHN-19-10/12 •	28		PCX 038/041	25	
15	2	PHN-19-15/18 •	28		PCX 047/052	25	
18	2	PHN-19-15/18 •	28		PCX 047/052	25	
22	2.75	PHN-19-22/25 •	28		PCX 054/058	25	
25	2.75	PHN-19-22/25 •	28		PCX 054/058	25	
28	3	PHN-19-28/30 •	28		PCX 059/063	25	
30	3	PHN-19-28/30 •	28		PCX 059/063	25	
32	3.5	PHN-19-32 •	28		PCX 059/063	25	
35	3.5	PHN-19-35/38 •	24		PCX 063/068	25	
38	3.5	PHN-19-35/38 •	24		PCX 063/068	25	
42	3.75	PHN-19-42/45 •	24		PCX 068/073	10	
45	3.75	PHN-19-42/45 •	24		PCX 068/073	10	
48	4.25	PHN-19-48 •	24		PCX 072/080	10	
54	4.25	PHN-19-54/57 •	24		PCX 082/085	10	
57	4.25	PHN-19-54/57 •	24		PCX 082/085	10	
60	4.75	PHN-19-60/64 •	20		PCX 088/092	10	
64	4.75	PHN-19-60/64 •	20		PCX 088/092	10	

Pipe max. Outside - Ø (mm)	Max permissible distance (m)	25mm INSULATION THICKNESS			CLAMPS 25mm		
		Code	Pieces/carton		Code	Pieces/carton	
15	2	PHN-25-15/18 •	28		PCX 059/063	25	
18	2	PHN-25-15/18 •	28		PCX 059/063	25	
22	2.75	PHN-25-22/25 •	28		PCX 063/068	25	
25	2.75	PHN-25-25/25 •	28		PCX 063/068	25	
28	3	PHN-25-28/30 •	28		PCX 068/073	10	
30	3	PHN-25-28/30 •	28		PCX 068/073	10	
35	3.5	PHN-25-32 •	24		PCX 068/073	10	
38	3.5	PHN-25-35/38 •	24		PCX 072/080	10	
42	3.5	PHN-25-35/38 •	24		PCX 072/080	10	
45	3.75	PHN-25-42/45 •	24		PCX 082/085	10	
48	3.75	PHN-25-42/45 •	24		PCX 082/085	10	
54	4.25	PHN-25-48 •	24		PCX 088/092	10	
57	4.25	PHN-25-54/57 •	24		PCX 092/099	10	
60	4.25	PHN-25-54/57 •	24		PCX 092/099	10	
64	4.75	PHN-25-60/64 •	20		PCX 099/103	10	
76	4.75	PHN-25-60/64 •	20		PCX 099/103	10	
80	5.50	PHN-25-76/80 •	16		PCX 112/118	10	
89	5.50	PHN-25-76/80 •	16		PCX 112/118	10	

**Other information**

- Not a stock item

# UK & Ireland team

Always at your service



**JAMIE BOMBER**  
**National Sales Manager**  
e: jamie.bomber@armacell.com  
t. 07768 068 547



**JOHN BRADLEY**  
**Regional Sales Manager**  
e: john.bradley@armacell.com  
t. 07768 068 549



**JAY DAVEY**  
**Regional Sales Manager**  
e: jay.davey@armacell.com  
t. 07768 068 546



**GER COYNE**  
**Ireland Sales agent**  
e: gmpcoyne@eircom.net  
t. +353 872 580597



**McCAIG COLLIM LTD**  
**Northern Ireland Sales Agent**  
e: sales@mccaig-collim.co.uk  
t: 028 9077 7788



**JASON JEENES**  
**Application Specialist**  
e: jason.jeenes@armacell.com  
t. 07590 444 711



**TOM MERTON**  
**Technical Specialist**  
e: tom.merton@armacell.com  
t: 0161 287 7038

## CUSTOMER SERVICES TEAM



**CLARE OLDHAM**  
**Customer Services Manager**  
t: 0161 287 7106  
e: clare.oldham@armacell.com



**JONATHAN GRAY**  
**Customer Services Team Leader**  
t: 0161 287 7153  
e: jonathan.gray@armacell.com



**JOANNE DALEY**  
**Customer Services Coordinator - North & Ireland**  
t: 0161 287 7016  
e: joanne.daley@armacell.com



**EMMA ROBERTS-LOMAS**  
**Customer Services Coordinator - Central**  
t: 0161 287 7103  
e: emma.roberts-lomas@armacell.com



**KATHY SALT**  
**Customer Services Coordinator - South**  
t: 0161 287 7102  
e: kathy.salt@armacell.com



**GEORGINA NUTTALL**  
**Customer Services Coordinator**  
t: 0161 287 7101  
e: georgina.nuttall@armacell.com



Armacell UK, Mars Street, Oldham, OL9 6LY  
T: 0161 287 7100 F: 0161 633 2685  
E: info.uk@armacell.com W: armacell.co.uk