

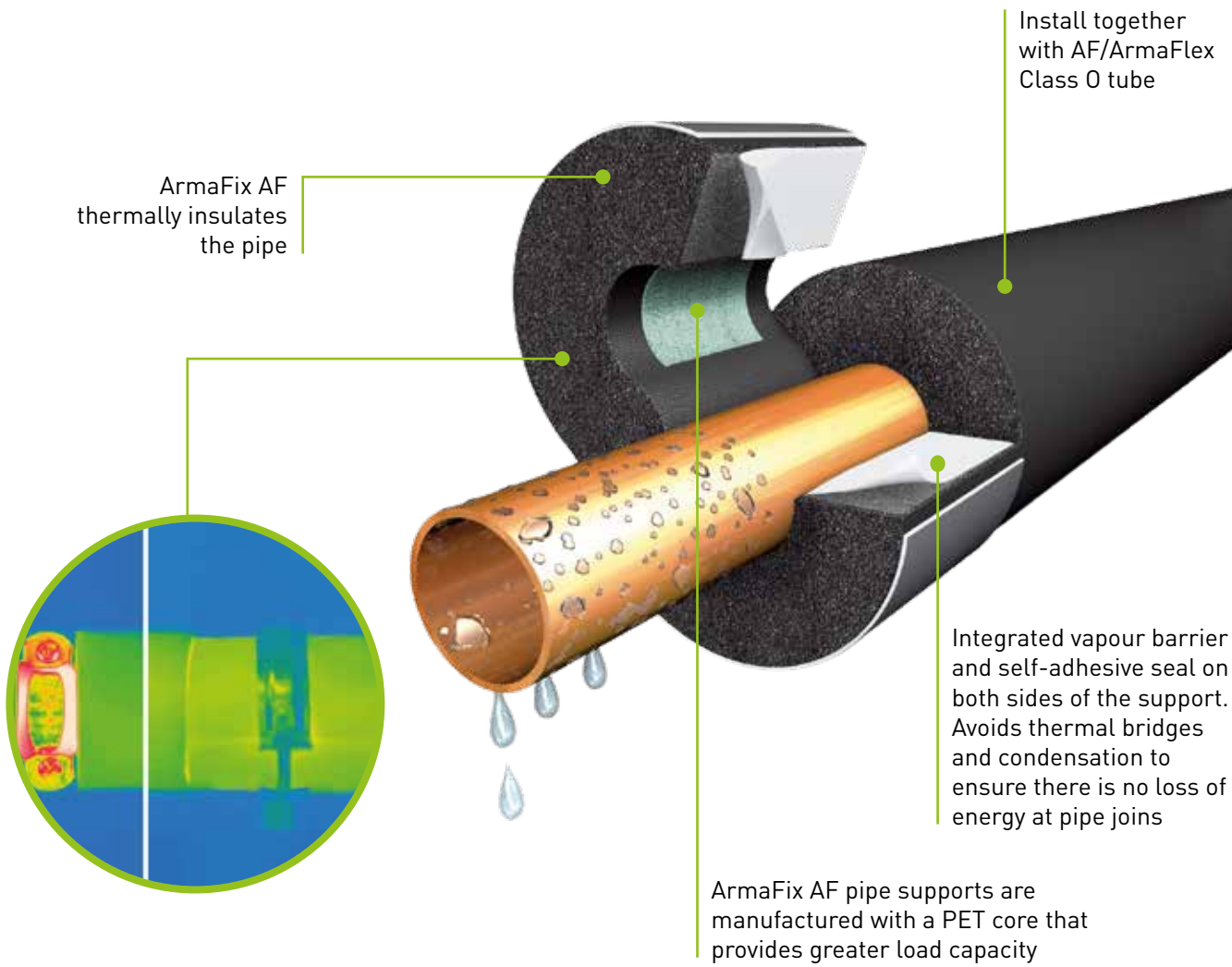
ArmaFix® AF



THE PRE-INSULATED PIPE SUPPORTS FOR CONDENSATION CONTROL & COMPATIBILITY WITH AF/ARMAFLEX

- Now with environmentally friendly PET core, with greater load capacity
- Built-in vapour barrier to prevent thermal bridges
- Easy installation with self-adhesive closure
- High mechanical resistance
- Optimised combi-packs available with matching clamp and support

PROPERTIES



COMBI-PACK

ArmaFix AF pipe supports are available in convenient combi-packs which include the brackets and their corresponding clamps.



DUCT SUPPORTS

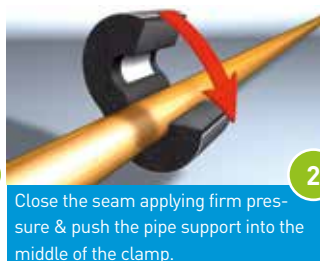
The ArmaFix AF pipe supports are designed to thermally insulate joints on duct installations.



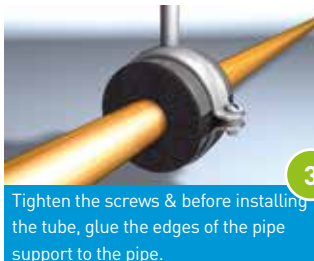
INSTALLATION GUIDE



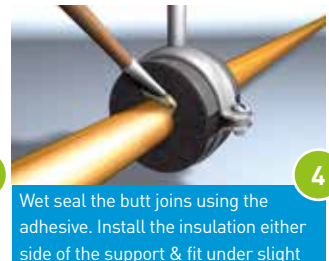
Install the support around the pipe, seal the surface using self-adhesive tape.



Close the seam applying firm pressure & push the pipe support into the middle of the clamp.



Tighten the screws & before installing the tube, glue the edges of the pipe support to the pipe.



Wet seal the butt joints using the adhesive. Install the insulation either side of the support & fit under slight compression.

RANGE

PIPE SUPPORTS & CLAMPS



DUCT SUPPORT



RECOMMENDED PRODUCTS

For a complete installation



ArmaFlex 520 adhesive



ArmaFlex RS850 adhesive



AF/ArmaFlex Class 0

TECHNICAL DATA

Supports for pipe and ductwork to avoid condensation at fixing points in refrigeration and air conditioning installations.
Compatible with AF/ArmaFlex Class O range.

| | |
|---------------------------------|--|
| Material type | PET foam bearing segments, embedded in and glued to ArmaFlex elastomeric foam material. Outside bearing shells made from painted aluminium sheeting 0.8mm thick. One-piece support with self-seal fastener, complete with 2 ArmaFORM PET insert sections (RG 100kg/m ³). Available to fit a wide range of pipe diameters. Two half round steel pipe clamps with electrolytically applied zinc coating. |
| Colour | Dark Grey |
| Material information | Traces of silicon can be found on the protective film used on the self-adhesive closures. Maximum clamp distances apply for vertical load effects on horizontal installations with predominantly static loads. Combined slot/cross tensioning screws supplied loosely secured. |
| Applications | Insulated pipe and duct supports to prevent thermal and acoustic bridging at fixing points on refrigeration systems and chilled water pipes. |
| Safety & environment | Zero ODP, Zero GWP, Dust and fibre free |
| Remarks | When used in installations with intermittent temperatures, extensions and contractions of pipework may exert pressure on the insulation. This needs to be considered in the overall application by ensuring suitable compression of ArmaFlex at joining points. |

| Property | Value/Assessment | Standards & Remarks |
|---|--|--|
| Temperature Range | | |
| Max service temperature | +110 °C | |
| Min service temperature | -50 °C (For temperatures below -50 °C please contact our technical department) | |
| Thermal Conductivity | | |
| | $\lambda \text{ 0}^\circ\text{C} \leq 0.033 \text{ W/(m}\cdot\text{K)} \quad [33+0.1 \cdot \varrho_m + 0.0008 \cdot \varrho_m^2]/1000$ | Declared acc. to EN ISO 13787. Tested acc. to EN12667 & EN ISO 8497 |
| Water Vapour Diffusion Resistance | | |
| | $\mu \geq 10,000$ | Tested acc.to EN 12086 & EN 13469 |
| Fire Performance | | |
| Reaction to fire | Same as AF/ArmaFlex elastomeric foam Inhouse quality monitoring | Classified acc. to EN 13501-1. Tested acc. to EN 13823 & EN ISO 11925-2 |
| Entire system with ArmaFlex insulation: Low flammability | B _L -s3, d0 | |
| Practical fire behaviour | Self-extinguishing, does not drip & does not spread flames | |
| Acoustic Performance | | |
| Reduction of structure-borne sound transmission | According to insulation material used in the clamp/pipe fastener | |
| Other technical features | | |
| Density | 95 - 105 kg/m ³ (pipe bearing segments) | |
| Storage & shelf life | Products with self-adhesive closures to be installed within 1 year | Store in dry, clean conditions at normal relative humidity (50% to 70%) and ambient temperature (0 °C - 35 °C) |

| ArmaFix Clamps | |
|-----------------------------|---|
| Description | Pipe clamp with quick release closing and combination mounting nut |
| Material type | Steel with an electrolytic zinc coating to protect the clamp from corrosion. |
| Colour | Silver |
| Material information | Clamp supplied with combination nut for fixing to threaded rod. |
| Applications | For use alongside ArmaFlex insulation at pipe hanging points to eliminate thermal bridging on refrigeration and air-conditioning installations. |
| Fire Performance | The insulation layer does not affect fire performance of the steel clamp |
| Screw connections | M8 / M10 combination nut |
| Tension screws | M6 / M8 |
| Clamp | Width 20mm - 30mm, Thickness 1.5mm - 3mm |

PIPE SUPPORTS AND CLAMPS



| Pipe max. Outside - Ø (mm) | Max permissible distance (m) | AF-2 INSULATION THICKNESS 12 - 16.5mm | | | | | | CLAMPS AF-2 | | |
|----------------------------|------------------------------|---------------------------------------|----------------|--------------|-------------|----------------|-------------|----------------|--|--|
| | | Code | Thickness [mm] | Outer Ø [mm] | Length [mm] | Pieces/ carton | Code | Pieces/ carton | | |
| 10 | 2 | FX-2-10/12 • | 12 | 34 | 45 | 32 | PCX 025/030 | 25 | | |
| 12 | 2 | FX-2-10/12 • | 12 | 36 | 45 | 32 | PCX 025/030 | 25 | | |
| 15 | 2 | FX-2-15/18 • | 12.5 | 40 | 45 | 32 | PCX 033/037 | 25 | | |
| 18 | 2 | FX-2-15/18 • | 12.5 | 43 | 45 | 32 | PCX 033/037 | 25 | | |
| 22 | 2.75 | FX-2-22/25 • | 12.5 | 47 | 45 | 32 | PCX 042/046 | 25 | | |
| 25 | 2.75 | FX-2-22/25 • | 12.5 | 50 | 45 | 32 | PCX 042/046 | 25 | | |
| 28 | 3 | FX-2-28/30 • | 12.5 | 53 | 45 | 32 | PCX 047/052 | 25 | | |
| 30 | 3 | FX-2-28/30 • | 13 | 56 | 45 | 32 | PCX 047/052 | 25 | | |
| 35 | 3.5 | FX-2-35/38 • | 13 | 61 | 50 | 28 | PCX 054/058 | 25 | | |
| 38 | 3.5 | FX-2-35/38 • | 13.5 | 65 | 50 | 28 | PCX 054/058 | 25 | | |
| 42 | 3.75 | FX-2-42/45 • | 13.5 | 69 | 50 | 28 | PCX 063/068 | 25 | | |
| 45 | 3.75 | FX-2-42/45 • | 13.5 | 72 | 50 | 28 | PCX 063/068 | 25 | | |
| 48 | 4.25 | FX-2-48 • | 14 | 76 | 55 | 28 | PCX 068/073 | 10 | | |
| 54 | 4.25 | FX-2-54/57 • | 14 | 82 | 55 | 28 | PCX 072/080 | 10 | | |
| 57 | 4.25 | FX-2-54/57 • | 14 | 85 | 55 | 28 | PCX 072/080 | 10 | | |
| 60 | 4.75 | FX-2-60/64 • | 16 | 92 | 65 | 24 | PCX 082/085 | 10 | | |
| 64 | 4.75 | FX-2-60/64 • | 16 | 96 | 65 | 24 | PCX 082/085 | 10 | | |
| 70 | 4.75 | FX-2-70 • | 14 | 98 | 65 | 24 | PCX 092/099 | 10 | | |
| 76 | 5.50 | FX-2-76/80 • | 14.5 | 105 | 75 | 20 | PCX 099/103 | 10 | | |
| 80 | 5.50 | FX-2-76/80 • | 14.5 | 109 | 75 | 20 | PCX 099/103 | 10 | | |
| 89 | 6 | FX-2-89 • | 14.5 | 118 | 95 | 16 | PCX 112/118 | 10 | | |
| 102 | 6 | FX-2-102/108 • | 16 | 134 | 95 | 16 | PCX 133/137 | 10 | | |
| 108 | 6 | FX-2-102/108 • | 16.5 | 141 | 95 | 16 | PCX 133/137 | 10 | | |
| 114 | 6 | FX-2-110/114 • | 15 | 144 | 115 | 12 | PCX 137/142 | 10 | | |
| 125 | 6 | FX-2-125 • | 16.5 | 158 | 115 | 12 | PCX 145/152 | 10 | | |

| Pipe max. Outside - Ø (mm) | Max permissible distance (m) | AF-2 INSULATION THICKNESS 12 - 16.5mm | | | | | | CLAMPS AF-2 | | |
|----------------------------|------------------------------|--|----------------|--------------|-------------|----------------|--|-------------|----------------|--|
| | | Code | Thickness [mm] | Outer Ø [mm] | Length [mm] | Pieces/ carton | | Code | Pieces/ carton | |
| 133 | 6 | FX-2-133/140 • | 16 | 165 | 115 | 12 | | PCX 159/164 | 10 | |
| 140 | 6 | FX-2-133/140 • | 16 | 172 | 115 | 12 | | PCX 159/164 | 10 | |
| 160 | 6 | FX-2-160 • | 16.5 | 193 | 115 | 9 | | PCX 190 | 10 | |
| 165 | 6 | FX-2-165/168 • | 16.5 | 198 | 125 | 9 | | PCX 199 | 10 | |
| 168 | 6 | FX-2-165/168 • | 16.5 | 201 | 125 | 9 | | PCX 199 | 10 | |

| Pipe max. Outside - Ø (mm) | Max permissible distance (m) | AF-4 (AF-3) INSULATION THICKNESS 18 - 25mm | | | | | | CLAMPS AF-4 (AF-3) | | |
|----------------------------|------------------------------|---|----------------|--------------|-------------|----------------|--|--------------------|----------------|--|
| | | Code | Thickness [mm] | Outer Ø [mm] | Length [mm] | Pieces/ carton | | Code | Pieces/ carton | |
| 10 | 2 | FX-4(3)-10/12 • | 18 | 46 | 55 | 28 | | PCX 042/046 | 25 | |
| 12 | 2 | FX-4(3)-10/12 • | 18 | 48 | 55 | 28 | | PCX 042/046 | 25 | |
| 15 | 2 | FX-4(3)-15/18 • | 18.5 | 52 | 55 | 28 | | PCX 042/046 | 25 | |
| 18 | 2 | FX-4(3)-15/18 • | 18.5 | 55 | 55 | 28 | | PCX 042/046 | 25 | |
| 22 | 2.75 | FX-4(3)-22/25 • | 19 | 60 | 55 | 28 | | PCX 054/058 | 25 | |
| 25 | 2.75 | FX-4(3)-22/25 • | 19 | 64 | 55 | 28 | | PCX 054/058 | 25 | |
| 28 | 3 | FX-4(3)-28/30 • | 19 | 66 | 55 | 28 | | PCX 063/068 | 25 | |
| 30 | 3 | FX-4(3)-28/30 • | 19 | 68 | 55 | 28 | | PCX 063/068 | 25 | |
| 35 | 3.5 | FX-4(3)-35/38 • | 19.5 | 74 | 65 | 24 | | PCX 068/073 | 10 | |
| 38 | 3.5 | FX-4(3)-35/38 • | 19.5 | 77 | 65 | 24 | | PCX 068/073 | 10 | |
| 42 | 3.75 | FX-4(3)-42/45 • | 21.5 | 85 | 65 | 24 | | PCX 072/080 | 10 | |
| 45 | 3.75 | FX-4(3)-42/45 • | 21.5 | 88 | 65 | 24 | | PCX 072/080 | 10 | |
| 48 | 4.25 | FX-4(3)-48 • | 21.5 | 91 | 65 | 24 | | PCX 082/085 | 10 | |
| 54 | 4.25 | FX-4(3)-54/57 • | 22 | 98 | 65 | 24 | | PCX 088/092 | 10 | |
| 57 | 4.25 | FX-4(3)-54/57 • | 22 | 101 | 65 | 24 | | PCX 088/092 | 10 | |
| 60 | 4.75 | FX-4(3)-60/64 • | 22.5 | 105 | 75 | 20 | | PCX 099/103 | 10 | |
| 64 | 4.75 | FX-4(3)-60/64 • | 22.5 | 109 | 75 | 20 | | PCX 099/103 | 10 | |
| 70 | 4.75 | FX-4(3)-70 • | 23 | 116 | 75 | 20 | | PCX 108/112 | 10 | |
| 76 | 5.50 | FX-4(3)-76/80 • | 23 | 122 | 85 | 16 | | PCX 112/118 | 10 | |
| 80 | 5.50 | FX-4(3)-76/80 • | 23.5 | 127 | 85 | 16 | | PCX 112/118 | 10 | |
| 89 | 6 | FX-4(3)-89 • | 23.5 | 136 | 100 | 12 | | PCX 133/137 | 10 | |
| 102 | 6 | FX-4(3)-102/108 • | 23.5 | 149 | 100 | 12 | | PCX 137/142 | 10 | |
| 108 | 6 | FX-4(3)-102/108 • | 24 | 156 | 100 | 12 | | PCX 137/142 | 10 | |
| 114 | 6 | FX-4(3)-110/114 • | 24 | 162 | 115 | 12 | | PCX 145/152 | 10 | |
| 125 | 6 | FX-4(3)-125 • | 24 | 173 | 115 | 12 | | PCX 168/173 | 10 | |
| 133 | 6 | FX-4(3)-133/140 • | 25 | 183 | 115 | 12 | | PCX 190 | 10 | |
| 140 | 6 | FX-4(3)-133/140 • | 25 | 190 | 115 | 12 | | PCX 190 | 10 | |
| 160 | 6 | FX-4(3)-160 • | 25 | 210 | 115 | 6 | | PCX 206 | 10 | |
| 165 | 6 | FX-4(3)-165/168 • | 25.5 | 216 | 125 | 6 | | PCX 222 | 10 | |
| 168 | 6 | FX-4(3)-165/168 • | 25.5 | 219 | 125 | 6 | | PCX 222 | 10 | |

| Pipe max. Outside - Ø (mm) | Max permissible distance (m) | AF-6 INSULATION THICKNESS 29.5 - 4.5mm | | | | | | CLAMPS AF-6 | | |
|----------------------------|------------------------------|---|----------------|--------------|-------------|----------------|--|-------------|----------------|--|
| | | Code | Thickness [mm] | Outer Ø [mm] | Length [mm] | Pieces/ carton | | Code | Pieces/ carton | |
| 15 | 2 | FX-6-15/18 • | 29.5 | 74 | 75 | 20 | | PCX068/073 | 10 | |
| 18 | 2 | FX-6-15/18 • | 29.5 | 77 | 75 | 20 | | PCX068/073 | 10 | |
| 22 | 2.75 | FX-6-22/25 • | 29 | 80 | 75 | 20 | | PCX072/080 | 10 | |
| 25 | 2.75 | FX-6-22/25 • | 29 | 83 | 75 | 20 | | PCX072/080 | 10 | |
| 28 | 3 | FX-6-28/30 • | 31.5 | 91 | 75 | 20 | | PCX082/085 | 10 | |
| 30 | 3 | FX-6-28/30 • | 31.5 | 93 | 75 | 20 | | PCX082/085 | 10 | |
| 35 | 3.5 | FX-6-35/38 • | 34.5 | 104 | 85 | 16 | | PCX099/103 | 10 | |
| 38 | 3.5 | FX-6-35/38 • | 34.5 | 107 | 85 | 16 | | PCX099/103 | 10 | |
| 42 | 3.75 | FX-6-42/45 • | 35.5 | 113 | 85 | 16 | | PCX099/103 | 10 | |
| 45 | 3.75 | FX-6-42/45 • | 35.5 | 116 | 85 | 16 | | PCX099/103 | 10 | |
| 48 | 4.25 | FX-6-48 • | 35.5 | 119 | 85 | 16 | | PCX112/118 | 10 | |
| 54 | 4.25 | FX-6-54/57 • | 36 | 126 | 85 | 16 | | PCX112/118 | 10 | |
| 57 | 4.25 | FX-6-54/57 • | 36 | 129 | 85 | 16 | | PCX112/118 | 10 | |
| 60 | 4.75 | FX-6-60/64 • | 37 | 134 | 100 | 12 | | PCX133/137 | 10 | |
| 64 | 4.75 | FX-6-60/64 • | 37 | 138 | 100 | 12 | | PCX133/137 | 10 | |
| 70 | 4.75 | FX-6-70 • | 37 | 144 | 100 | 12 | | PCX137/142 | 10 | |
| 76 | 5.50 | FX-6-76/80 • | 38 | 152 | 115 | 12 | | PCX137/142 | 10 | |
| 80 | 5.50 | FX-6-76/80 • | 38 | 156 | 115 | 12 | | PCX137/142 | 10 | |
| 89 | 6 | FX-6-89 • | 39 | 167 | 125 | 12 | | PCX159/164 | 10 | |
| 102 | 6 | FX-6-102/108 • | 38.5 | 179 | 125 | 12 | | PCX190 | 10 | |
| 108 | 6 | FX-6-102/108 • | 40 | 188 | 125 | 12 | | PCX190 | 10 | |
| 114 | 6 | FX-6-110/114 • | 41 | 196 | 145 | 12 | | PCX199 | 10 | |
| 125 | 6 | FX-6-125 • | 41 | 207 | 145 | 12 | | PCX206 | 10 | |
| 133 | 6 | FX-6-133/140 • | 43 | 219 | 145 | 8 | | PCX231 | 10 | |
| 140 | 6 | FX-6-133/140 • | 42.5 | 225 | 145 | 8 | | PCX231 | 10 | |
| 160 | 6 | FX-6-160 • | 44 | 248 | 145 | 6 | | PCX249 | 10 | |
| 165 | 6 | FX-6-165/168 • | 44.5 | 254 | 165 | 5 | | PCX259 | 10 | |
| 168 | 6 | FX-6-165/168 • | 44.5 | 257 | 165 | 5 | | PCX259 | 10 | |

DUCT SUPPORT



ARMAFIX AF DUCT SUPPORT

| Code | Thickness [mm] | Width [mm] | Length [m] | Pieces/carton | |
|---------|----------------|------------|------------|---------------|--|
| AS-19MM | 19 | 100 | 2 | 5 | |
| AS-25MM | 25 | 100 | 2 | 4 | |

Other information

- Not a stock item

Supports above 165.1mm diameter are supplied in two pieces.

Max. permissible distance [m] according to DIN 1988.