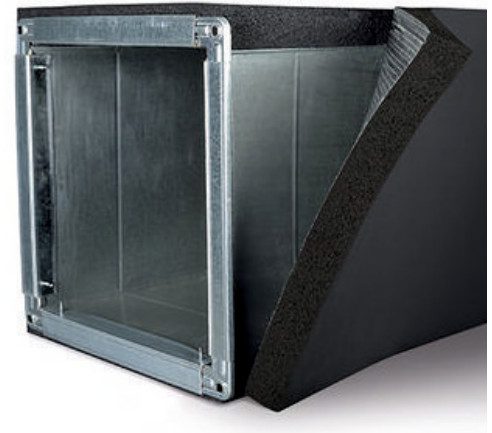




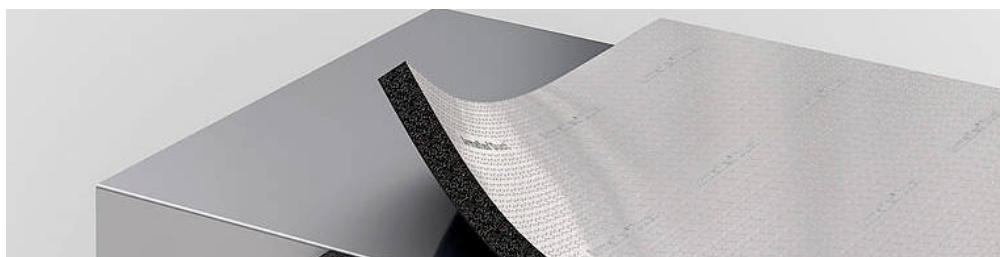
SEAMLESS JOINT FOR LIFETIME

ArmaFlex® DuctSeal

- // Seamless strong joints
- // Good coverage
- // Quick drying
- // Easy to apply
- // Very good adhesion strenght
- // Optimal viscosity



www.armacell.in



 **armacell**
ArmaFlex®

SEAMLESS JOINT FOR LIFETIME

ArmaFlex DuctSeal

Air drying contact adhesive for joining ArmaFlex and ArmaSound sheet insulations to metal ducting.

Good Coverage



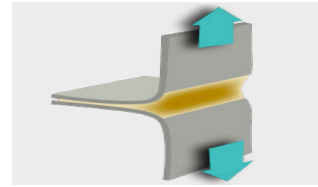
Quick Drying



Easy to Apply



Good Adhesion Strength



Benefits

// Adhesion strength

Air drying contact adhesive for joining ArmaFlex and ArmaSound sheet insulations to metal ducting with seamless strong joints hold technology.

// Quick drying

With Armacell's quick drying technology stop worrying about long wait application time.

// Easy to apply

Quick and easy installation with good coverage helping you save resources and time.



TECHNICAL DATA - ArmaFlex DuctSeal

Brief description	Air drying contact adhesive for joining ArmaFlex and ArmaSound sheet insulations to metal ducting.	
Material type	Rubber based contact adhesive in blend of solvents.	
Colour	Pale yellow	
Product range	5 and 30 litres	
Applications	Recommended for duct insulation. Not recommended for piping.	
Environmental safety aspects	Highly flammable. Keep away from open flame.	
Property	Value/Assessment	Special Remark
Temperature range		
	Maximum service temperature	+ 85 °C
	Minimum service temperature	+5 °C
Viscosity @ 30 °C	700 - 1200 CPS	
Specific gravity	0.80 - 0.85 g/cc	
Flash point	> 10°C	
Practical fire behaviour	Doesn't affect the fire resistance properties of the insulation negatively, once it dries or cures.	
Drying time	4 - 5 minutes for tack drying, depending on the ambient conditions. Allow 36 hours for complete curing before lines are charged. High humidity (greater than 90 %) may prolong the drying time.	
Health aspects	Don't work in closed environments, work in well ventilated areas.	
Storage & shelf life	Up to 12 months in original unopened containers when stored indoors, away from direct Sunlight.	
Coverage	6-8 m2 of bonded area*	
Application instructions	<div>1. Before using, stir adhesive thoroughly to ensure mixing of solids which may have settled.</div> <div>2. Use brush with short stiff bristles. Apply a thin uniform film of adhesive, to both surfaces to be joined.</div> <div>3. Do fingernail test to check for tack dry. If fingernail doesn't stick to the surface, the joint may be closed.</div> <div>4. Wet seal where it is not possible to allow the adhesive to tack dry before joining, like in butt joints.</div> <div>5. A wet seal may be made by separating the surfaces, applying a thin film of adhesive and closing joint.</div> <div>6. Allow minimum 36 hours of curing before charging the line or applying any coating.</div> <div>7. Minimum application temperature +20°C to +30°C.</div> <div>8. Do not mix any other solvent such as thinner or water with the adhesive.</div> <div>9. Adhesive to be applied in shadow area only.</div>	
Pre-treatment of surface to be bonded	<div>Clean dirty surfaces and the ArmaFlex surface with clean cloth or cotton.</div> <div>Compatibility with bases: Very good adhesion to metallic base. The compatibility with coloured coated surfaces with adhesive needs to be tested</div> <div>Incompatible with : Asphalt, bitumen or red lead paint (In seed oil based).</div>	

*All data and technical information are based on results achieved under typical application conditions. Recipients of this information should, in their own interest and responsibility. clarify with us in due time whether or not the data and information. Apply to the intended application area. Installation instructions are available in our ArmaFlex installation manual.

*Area of ArmaFlex material and duct together per litre.

Contact information or visiting card



All data and technical information are based on results achieved under the specific conditions defined according to the testing standards referenced. It is the customer's responsibility to verify if the product is suitable for the intended application. The responsibility for professional and correct installation and compliance with relevant building regulations lies with the customer. Armacell takes every precaution to ensure the accuracy of the data provided in this document and all statements, technical information and recommendations contained within are believed to be correct at the time of publication. By ordering/receiving product you accept the **Armacell General Terms and Conditions of Sale** applicable in the region. Please request a copy if you have not received these.

© Armacell, 2018. ® and ™ are trademarks of the Armacell Group and is registered in the European Union, United States of America, and other countries.

00130 | ArmaFlex DuctSeal | ArmaFlex | TDS | 072020 | IN | EN

ABOUT ARMACELL

As the inventors of flexible foam for equipment insulation and a leading provider of engineered foams, Armacell develops innovative and safe thermal, acoustic and mechanical solutions that create sustainable value for its customers. Armacell's products significantly contribute to global energy efficiency making a difference around the world every day. With 3,135 employees and 24 production plants in 16 countries, the company operates two main businesses, Advanced Insulation and Engineered Foams. Armacell focuses on insulation materials for technical equipment, high-performance foams for high-tech and lightweight applications and next generation aerogel blanket technology.



Scan QR code for digital copy

For more information, please visit:
www.armacell.com

 **armacell**[®]
ArmaFlex[®]