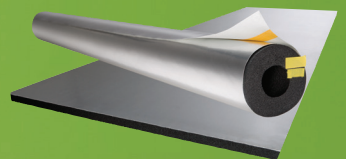
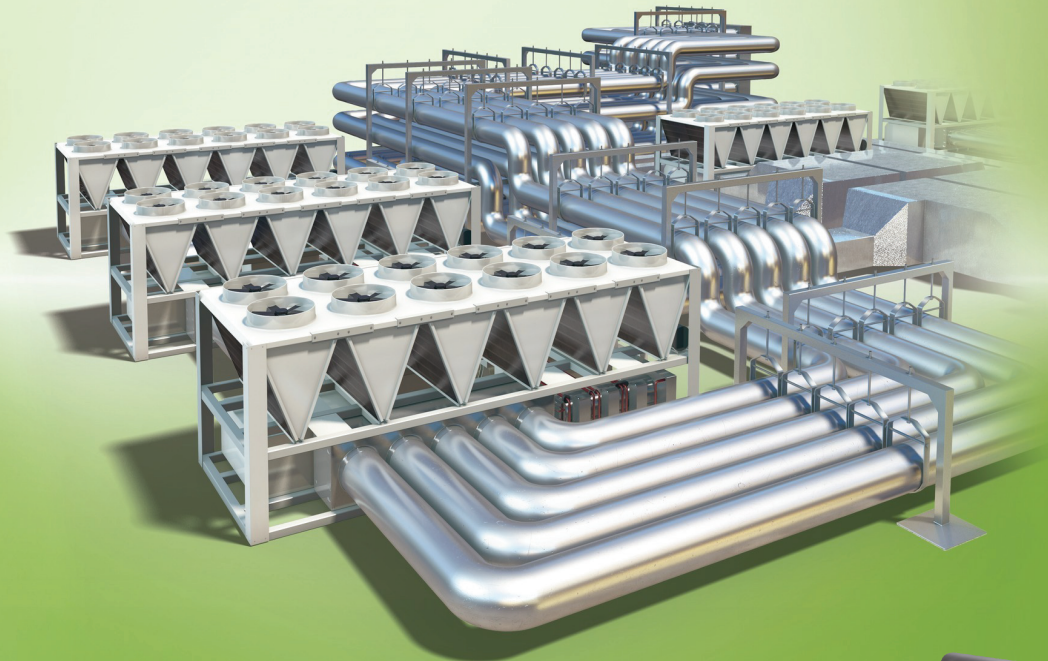


Arma-Chek®
Silver

FLEXIBLE MECHANICAL PROTECTION



- Insulation and covering in one product
- Saves installation time
- Easy to clean
- Full system with Tape, Elbows and T-Parts
- Good chemical resistance

Technical Data - Arma-Chek Silver

Brief description	Arma-Chek Silver is a covering system with a double layer laminate of aluminium, coated with a special UV protection and a PVC backing. Enclosing an Armaflex substrate, the Arma-Chek Silver jacketing is highly puncture and tear resistant as well as flame retardant. Arma-Chek Silver can be used for insulation and protection of HVAC and Refrigeration systems inside or outside.
Material type	Insulation: Highly flexible, closed-cell elastomeric foam material based on synthetic rubber. Covering: double layer laminate of aluminium, coated with a special UV protection and a PVC backing.
Colour	silver (covering)
Product Range	Arma-Chek Silver is available in a range of pre-insulated tubes & sheets, as well as single covering.
Applications	Insulation and protection of pipes, ducts, valves and vessels of refrigeration and air conditioning equipments, clean room environments, food industries etc.
Special Features	Declaration of Performance is available in accordance with Article 7(3) of Regulation (EU) No 305/2011 on our homepage: www.armacell.com/DoP
Assembly	The Armaflex and Arma-Chek installation manuals should be consulted before assembly. We offer special installation courses for the application of Arma-Chek. Please consult our Customer Service.
Remarks	For outdoor use please note: Testing regarding UV resistance of these materials showed excellent results. When used on outdoor applications the materials showed very good durability even under UV exposition. However, due to the unpredictable nature of outdoor conditions in the whole variety of thinkable installations, there might be occasional weathering influences on the materials' consistence, which can not be tested in advance. Therefore, installations in extreme environments (regions of extreme weather conditions like high mountains etc.) can not be recommended. In case of doubt please contact our Customer Service.

Property	Value/Assessment			Test ^{*1}	Special Remark
Temperature Range					
Temperature Range ¹	max. service temperature	+110 °C for substrate (+85 °C if sheet is glued to the object with its whole surface)	(+75 °C for the silver jacketing)	EU 5695	Tested acc. to EN 14706, EN 14707 and EN 14304
	min. service temperature ²	-25 °C			
Thermal Conductivity					
Thermal Conductivity	depends on used Armaflex substrate			EU 5695 EU 6430	Declared acc. to EN ISO 13787 Tested acc. to EN 12667 EN ISO 8497
Water vapour diffusion resistance					
Water vapour diffusion resistance	sheets and tubes	μ	≥	15.000	
Fire performance					
Reaction to fire	Arma-Chek Silver (AF) tubes	C _L -s3, d0		EU 5695	EN 13823 EN ISO 11925-2
	Arma-Chek Silver (AF) sheets 13 - 25 mm	C-s3, d0			
	Arma-Chek Silver (AF) sheets 32 - 50 mm	D-s3, d0			
	Arma-Chek Silver (ACE) tubes and sheets	E			
Other technical features					
Dimensions and tolerances					
Weight	approx. 340 g/m² (covering)				Tested according to EN 22286
Material thickness	approx. 230 μm				Tested according to EN 22286
Resistance to mechanical impact	Good puncture and tear resistance.				
UV resistance ³	Excellent			TB 142	Tested according to EN ISO 4892-2 (Xenon-Test)
Health aspects	Dust and fibre free.				
Storage & Shelf life	Tape, sheets, tubes, self-adhesive: 1 year				Can be stored in dry, clean rooms at normal relative humidity (50% to 70%) and ambient temperature (0 °C – 35 °C).

1. When there are fluctuations in temperature, the surface may wrinkle slightly, as elastomeric products expand and contract in these circumstances. However, these superficial changes do not have any impact on the performance of the material. The wrinkles usually disappear as soon as the plant is heated to its original operating temperature.

2. For temperatures below -30 °C or above +100 °C, please consult our Customer Service Center for further information.

3. In outdoor applications the colour may fade. This does not have any impact on the functionality of the covering or the insulation material.

*1 Further documents such as test certificates, approvals and the like can be requested using the registration number given.

All data and technical information are based on results achieved under typical application conditions. Recipients of this information should, in their own interest and responsibility, clarify with us in due time whether or not the data and information apply to the intended application area. Installation instructions are available in our Arma-Chek installation manual. Please consult our Customer Service Center before insulating stainless steels. Armaflex 520 adhesive and Clipse must be used to guarantee proper installation.

Pol. Ind. Riera d'Esclanyà C/ Can Magí, 1 • 17213 Esclanyà - Begur • Girona • Spain
Phone +34 972 61 34 43 • Fax +34 972 98 26 69
www.armacell.es • info.es@armacell.com