



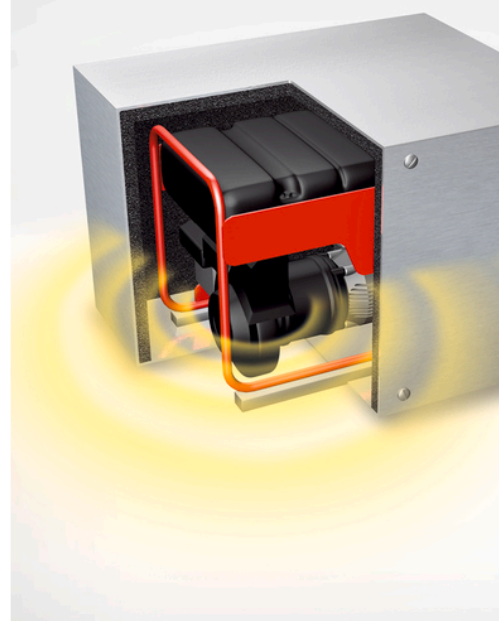
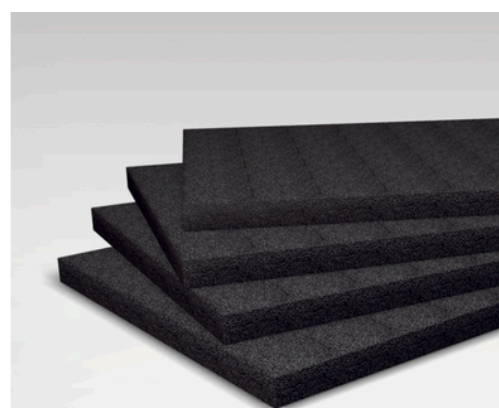
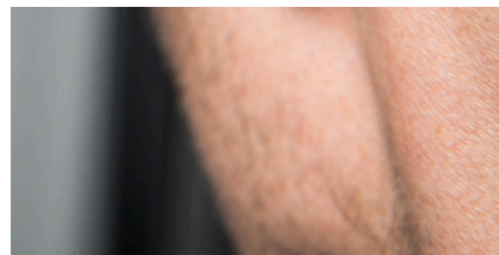
INSTALL IT. ENJOY QUIETNESS.

ArmaSound RD120

Excellent sound absorption performance

- // Retains acoustic properties throughout its service life
- // High acoustic performance with small wall thickness
- // Open-cell acoustic material highly flexible
- // Self-extinguishing, does not spread flames
- // Easy to apply and maintain

www.armacell.eu

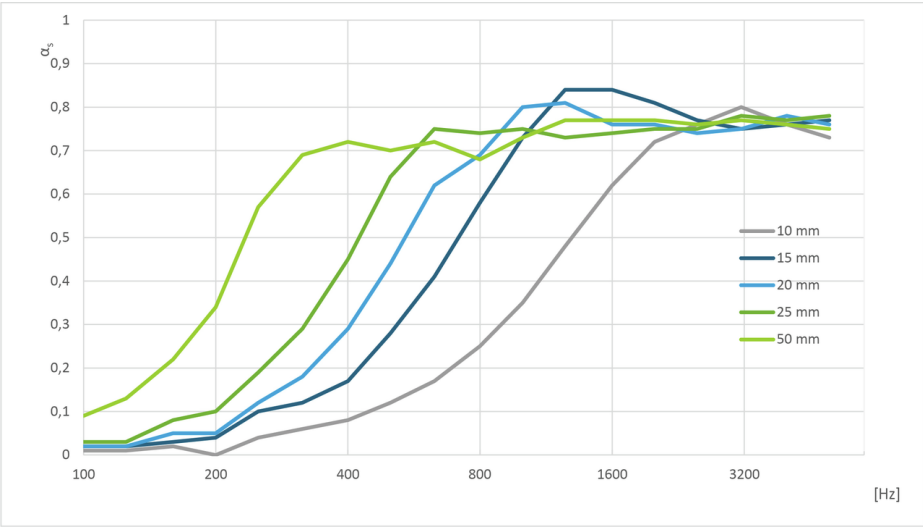


 **armacell**[®]
ArmaSound[®]

TECHNICAL DATA - ARMASOUND RD120

Brief description	Highly flexible, hydrophobic, open-cell acoustic insulation material with complex pore geometry
Material type	Elastomeric foam based on synthetic rubber.
Product colour range	Black
Special features	Excellent sound absorption performance.
Applications	Acoustic insulating material with high sound absorption performance for use in a variety of different applications, e.g. fan-coil units, cabinet linings, chiller systems, enclosures, pipelines etc.
Installation	Use ArmaFlex HT625 adhesive for a reliable and seamless installation.

Property	Value / Assessment						Standard / Test method
Temperature range							
Service temperature	Range	Min. °C			Max. °C		
	Full range	-20			85		
Fire Performance and Approvals							
Reaction to fire	E						EN ISO 11925-2
Fire performance							
Practical fire behaviour	Self-extinguishing, does not drip, does not spread flames.						
Physical attributes							
Density	≥ 100 kg/m³						
Acoustic performance							
Sound absorption average	Thickness (mm)	10	15	20	25	50	
	SAA	0,20	0,35	0,40	0,50	0,75	
Noise reduction coefficient	Thickness (mm)	10	15	20	25	50	
	NRC	0,30	0,45	0,50	0,55	0,70	
Octave band sound absorption coefficient, α	Thickness	10mm	15mm	20mm	25mm	50mm	
	125 Hz	0,01	0,02	0,03	0,05	0,15	
	250 Hz	0,03	0,09	0,12	0,19	0,53	
	500 Hz	0,12	0,29	0,45	0,61	0,71	
	1000 Hz	0,36	0,72	0,77	0,74	0,73	
	2000 Hz	0,70	0,81	0,75	0,75	0,77	
	4000 Hz	0,76	0,76	0,76	0,78	0,76	

Property	Value / Assessment	Standard / Test method
Absorption coefficient graph		
Practical sound absorption coefficient, α_p	$\leq 0,80$ EN ISO 20354	
Weather and UV resistance		
Weather resistance	In all industrial applications, except for enclosures and other similar sound absorption applications, the outer layer of the material must be protected with an adequate covering e.g. Arma-Chek R, metal jacketing or preformed UV-cured GRP (Glass-Reinforced Plastic) cladding. For further information, please contact Technical Services.	
Other technical features		
Adhesion and sealing	In some configurations, 19mm wide stainless steel bands with wing clips (or blind rivets) shall be used for fixing and final securing,	
Application conditions ¹	Application temperature: +5°C to +35°C (+41F to +95F) Max. relative humidity: 80%	
Shelf life ²	Max. 3 years Self-adhesive: 1 year	
Storage ²	Material shall be stored indoors, in clean and dry conditions, away from direct sunlight.	

¹Application temperature refers to the ambient temperature during installation and the surface temperature of the substrate (e.g. Arma-Chek R covering) to which the product is installed.

²Shelf life (maximum storage time) is limited to ensure that only currently manufactured products are installed on projects. This limitation is restricted solely to storage of the product and does not affect the lifetime of product after it has been installed.

Sheet – standard. Black

Item	Thickness [mm]	Width [m]	Length [m]	EAN	Primary content [metric]
ASD-120-06	6	1	1	7612207305234	8 m²
ASD-120-10	10	1	1	7612207305258	5 m²
ASD-120-15	15	1	1	7612207305272	3 m²
ASD-120-20	20	1	1	7612207305296	2 m²
ASD-120-25	25	1	1	7612207305319	2 m²
Other information					
Remarks		Primary content available in sheets packed in carton.			

Sheet – self-adhesive. Black

Item	Thickness [mm]	Width [m]	Length [m]	EAN	Primary content [metric]
ASD-120-06/A	6	1	1	7612207305241	8 m²
ASD-120-10/A	10	1	1	7612207305265	5 m²
ASD-120-15/A	15	1	1	7612207305289	3 m²
ASD-120-20/A	20	1	1	7612207305302	2 m²
ASD-120-25/A	25	1	1	7612207305326	2 m²
Other information					
Remarks		Primary content available in sheets packed in carton.			

Adhesives and Cleaners

Item	Description	Primary content [pieces]
ADH520/1,0E	1.0 litre tins of ArmaFlex 520 adhesive packed in a carton.	12 tin
ADH520/2,5E	2.5 litre tins of ArmaFlex 520 adhesive packed in a carton.	8 tin
ADH-HT625/0,25	ArmaFlex HT625 one-component adhesive. Available as 0.25 litre cans (with brush).	40 tin
ADH-HT625/0,5	ArmaFlex HT625 one-component adhesive. Available as 0.5 litre cans.	12 tin
ADH-HT625/1,0	ArmaFlex HT625 one-component adhesive. Available as 1.0 litre cans.	12 tin

All data and technical information are based on results achieved under the specific conditions defined according to the testing standards referenced. Despite taking every precaution to ensure that said data and technical information are up to date, Armacell does not make any representation or warranty, express or implied, as to the accuracy, content or completeness of said data and technical information. Armacell also does not assume any liability towards any person resulting from the use of said data or technical information. Armacell reserves the right to revoke, modify or amend this document at any moment. It is the customer's responsibility to verify if the product is suitable for the intended application. The responsibility for professional and correct installation and compliance with relevant building regulations lies with the customer. This document does not constitute nor is part of a legal offer to sell or to contract.

At Armacell, your trust means everything to us, so we want to let you know your rights and make it easier for you to understand what information we collect and why we collect it. If you would like to find out about our processing of your data, please visit our Data Protection Policy.

Trademarks followed by © or ™ are trademarks of the Armacell Group. © Armacell 2023. All rights reserved.

ArmaSound | ArmaSound RD120 | Brochure | 062023 | en-DE

ABOUT ARMACELL

As the inventor of flexible foam for equipment insulation and a leading provider of engineered foams, Armacell develops innovative and safe thermal and mechanical solutions that create sustainable value for its customers. Armacell's products significantly contribute to global energy efficiency making a difference around the world every day. With more than 3,300 employees and 27 production plants in 19 countries, the company operates two main businesses, Advanced Insulation and Engineered Foams. Armacell focuses on insulation materials for technical equipment, high-performance foams for acoustic and lightweight applications, recycled PET products, next-generation aerogel technology and passive fire protection systems.



For more information, please visit:
www.armacell.com



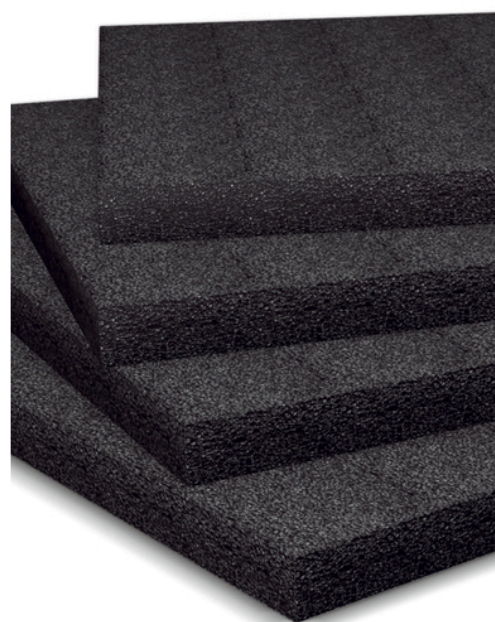
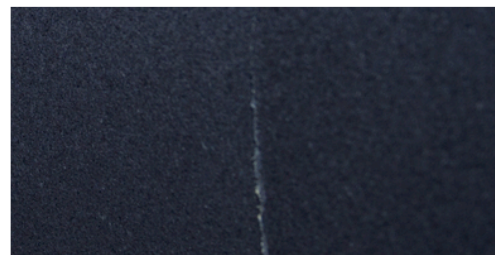
INSTALL IT. ENJOY QUIETNESS.

ArmaSound RD 240

Optimal performance at lower thickness

- // Excellent sound absorption behaviour
- // Highly hydrophobic, open-cell structure designed to resist water ingress
- // Air-flow resistivity and complex pore geometry for maximum acoustic benefit
- // Easy application and low maintenance
- // Designed for use in demanding environments

www.armacell.com/energy

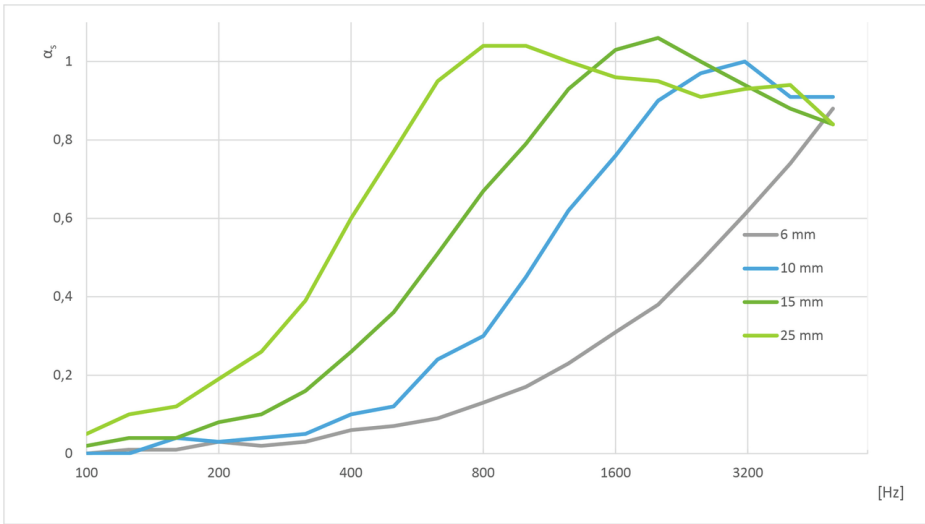


 **armacell**[®]
ArmaSound[®]

TECHNICAL DATA - ARMASOUND RD 240

Brief description	Highly flexible, hydrophobic, open-cell acoustic insulation material with complex pore geometry.
Material type	Elastomeric foam based NBR/PVC synthetic rubber.
Product colour range	Black
Special features	Excellent sound absorption performance.
Product range	Sheets, 10, 15, 20, and 25mm thickness / width 500 and 1000 mm / length 1000 and 2000 mm.
Applications	In general applications ArmaSound RD240 is used as acoustic insulation material with excellent sound absorption performance in a variety of different applications, e.g. fan-coil units, duct linings, cabinet linings, chiller systems, enclosures, pipelines. In industrial applications ArmaSound RD240 is used as an important component of ArmaSound Industrial Systems to provide acoustic insulation on industrial pipework and vessels ensuring reduction of sound transmission. Further industrial application area is sound absorption performance of enclosures.
Installation	Please refer to the ArmaSound Industrial Systems application manual before installation. Please contact Technical Services.
Remarks	Certificate of Fire Approval by Lloyd's Register [Class 1, BS 476 part 7].

Property	Value / Assessment					Standard / Test method
Temperature range						
Service temperature	Min. °C	Min. °F		Max. °C	Max. °F	EN 14706, EN 14707, EN 14304
	-20	-4		85	185	
Thermal conductivity						
Declared thermal conductivity	Øm			0 °C (32 °F)		EN 12667
	λd ≤ [W/(m·K)]			0,062		
	k ≤ [Btu-in/(h·ft²·°F)]			0,430		
Fire Performance and Approvals						
Surface burning characteristics	< 25 flame spread index					ASTM E84
Fire performance						
Practical fire behaviour	Self-extinguishing, does not drip, does not spread flames.					
Resistance to water						
Water absorption¹	≤ 10% by volume after 24 hours					AGI Q 136
Physical attributes						
Density	220 to 360 kg/m³ 13.7 to 25.5 lb/ft³					ISO 845, ASTM D1622
Mechanical properties						
Tensile strength	(MD) 70 to 190 kPa 10.2 to 27.6 psi					ISO 1798²
Elongation	50 to 90 %					ISO 1798²
Tear strength	0.4 to 1.4 kN/m 2.3 to 8.0 lbf/in					ISO 34-1³
Acoustic performance						
Weighted sound absorption coefficient, aw¹	6 mm: 0.15 (H) Class E 10 mm: 0.25 (H) Class E 15 mm: 0.40 (MH) Class D 25 mm: 0.55 (MH) Class C					ISO 354, EN ISO 11654
Noise reduction coefficient¹	Thickness (mm)	6	10	15	25	ASTM C423
	NRC	0,15	0,40	0,60	0,70	

Property	Value / Assessment					Standard / Test method
Octave band sound absorption coefficient, α^1	Thickness	6mm	10mm	15mm	25mm	
	125 Hz	0,01	0,01	0,03	0,09	
	250 Hz	0,03	0,04	0,11	0,28	
	500 Hz	0,07	0,15	0,38	0,77	
	1000 Hz	0,18	0,46	0,80	1,03	
	2000 Hz	0,39	0,87	1,03	0,94	
	4000 Hz	0,74	0,94	0,89	0,90	
Absorption coefficient graph						
Weather and UV resistance						
Weather resistance	In all industrial applications, except for enclosures and other similar sound absorption applications, the outer layer of the material must be protected with an adequate covering like Arma-Chek R, metal jacketing or preformed UV-cured GRP (Glass-Reinforced Plastic) cladding. For further information please contact Technical Services.					
Other technical features						
Additional remarks	For environmental conditions outside the given range please contact Technical Services.					
Adhesion and sealing	ArmaFlex Adhesive 520 or Adhesive HT625 shall be used for reliable adhesion of joints and seams. In some configurations 19 mm wide stainless steel bands with wing clips (or blind rivets) shall be used for fixing and final securing.					
Application conditions ⁴	Application temperature: +5 °C to +35 °C (+41 °F to +95 °F) Maximum relative humidity: 80%					
Shelf life ⁵	Max. 3 years					
Storage	Material shall be stored indoors, in clean and dry conditions, away from direct sunlight.					

¹Based on single test results. Can be used for information / reference only.

²Type 1 sample.

³Minimum value in Machine Direction (MD) and in Cross Direction (CD). Method B, procedure (b), angle test piece with a nick.

⁴Application temperature (temperature of installation) refers to the ambient temperature during application and the surface temperature of the substrate to which the product is installed.

⁵Shelf life (maximum storage time) is limited to ensure that only currently manufactured products are installed on projects. This limitation is restricted solely to storage of the product and does not affect the lifetime of product after it has been installed.

Sheet – standard. Black

Item	Thickness [mm]	Width [m]	Length [m]	EAN	Primary content [metric]
ASD-240-06	6	1	1	7612207304862	8 m²
ASD-240-10	10	1	1	7612207304886	5 m²
ASD-240-15	15	1	1	7612207304909	3 m²
ASD-240-20	20	1	1	7612207304923	2 m²
ASD-240-25	25	1	1	7612207304947	2 m²
Other information					
Remarks		Primary content available as sheet(s) packed in carton.			

Sheet – self-adhesive. Black

Item	Thickness [mm]	Width [m]	Length [m]	EAN	Primary content [metric]
ASD-240-06/A	6	1	1	7612207304879	8 m²
ASD-240-10/A	10	1	1	7612207304893	5 m²
ASD-240-15/A	15	1	1	7612207304916	3 m²
ASD-240-20/A	20	1	1	7612207304930	2 m²
ASD-240-25/A	25	1	1	7612207304954	2 m²
Other information					
Remarks		Primary content available as sheet(s) packed in carton.			

Adhesives and Cleaners

Item	Description	Primary content [pieces]
ADH520/1,0E	1.0 litre tins of ArmaFlex 520 adhesive packed in a carton.	12 tin
ADH520/2,5E	2.5 litre tins of ArmaFlex 520 adhesive packed in a carton.	8 tin
ADH-HT625/0,25	ArmaFlex HT625 one-component adhesive. Available as 0.25 litre cans (with brush).	40 tin
ADH-HT625/0,5	ArmaFlex HT625 one-component adhesive. Available as 0.5 litre cans.	12 tin
ADH-HT625/1,0	ArmaFlex HT625 one-component adhesive. Available as 1.0 litre cans.	12 tin

OUR CUSTOMERS EXPECT THE BEST. WE WORK HARD TO GO BEYOND THAT AND EXCEED THEIR EXPECTATIONS.

At Armacell we want to create a unique customer experience. We understand the challenges of today's construction industry and support you in the successful delivery of your projects. From planning to delivery, our 360° service supports you throughout the entire process.



SERVICE AND TECHNICAL INFORMATION AVAILABLE 24/7

At Armacell, we do everything we can to ensure your project runs smoothly. This is why the information about the Armacell services you benefit from is available 24/7 from Armacell.com website as well as from our planning tools (BIM, specification documents, ArmaWin, as well as our sustainable building policy)

DEDICATED LOCAL CONTACTS

We aim to create open lines of communication with our customers. From on-site trainings and webinars by our Armacell technical experts advising on project planning and safety instructions to our local dedicated sales and customer services, your local Armacell dedicated team is working in partnership with you to achieve more together.

DIGITAL INFORMATION FLOWS

From order to delivery, we also provide you with digital information flows such as EDI and other well-known data formats that are widely used in the construction sector worldwide.



OUR STANDARD LOGISTICS SERVICES INCLUDE

- // Material ordered will be shipped from our facilities within 48 hours after order confirmation
- // Full truck loads and full pallets (not mixed – 1 SKU per pallet)
- // List prices in this document are based on Ex Works
- // Container loading with standard goods
- // Customs clearance (including documentation) for standard deliveries outside EU
- // Dangerous goods process for road freight

WE GO BEYOND STANDARD SERVICES AND ALSO PROPOSE YOU ADDITIONAL SERVICES*

OPIMISED PACKAGING

- Edge protection
- Strapping
- Doubled stretching
- Reinforced cardboard with extra layer
- Additional warning tape

LABELLING

- Extra label for transport instructions

EXTRA DELIVERY SERVICES

- Just in time delivery
- Delivery with lifting platform for partial or complete load
- Express and direct shipments
- Booking a delivery time slot via your EDP system
- Forklift truck for unloading at construction site
- Air and sea freight deliveries
- Dangerous goods shipment process for air and sea freight



To mitigate cost increases and reduce waste generation, we also propose a pallet return service* by which pallets can be handed at Armacell collection points.

* Please contact your local Customer Service Centre to see which of these services apply to your country.

All data and technical information are based on results achieved under the specific conditions defined according to the testing standards referenced. Despite taking every precaution to ensure that said data and technical information are up to date, Armacell does not make any representation or warranty, express or implied, as to the accuracy, content or completeness of said data and technical information. Armacell also does not assume any liability towards any person resulting from the use of said data or technical information. Armacell reserves the right to revoke, modify or amend this document at any moment. It is the customer's responsibility to verify if the product is suitable for the intended application. The responsibility for professional and correct installation and compliance with relevant building regulations lies with the customer. This document does not constitute nor is part of a legal offer to sell or to contract.

At Armacell, your trust means everything to us, so we want to let you know your rights and make it easier for you to understand what information we collect and why we collect it. If you would like to find out about our processing of your data, please visit our Data Protection Policy.

Trademarks followed by © or ™ are trademarks of the Armacell Group. © Armacell 2023. All rights reserved.

ArmaSound | ArmaSound RD240 (EMEA) | Brochure | 062023 | en-DE

ABOUT ARMACELL

As the inventor of flexible foam for equipment insulation and a leading provider of engineered foams, Armacell develops innovative and safe thermal and mechanical solutions that create sustainable value for its customers. Armacell's products significantly contribute to global energy efficiency making a difference around the world every day. With more than 3,300 employees and 27 production plants in 19 countries, the company operates two main businesses, Advanced Insulation and Engineered Foams. Armacell focuses on insulation materials for technical equipment, high-performance foams for acoustic and lightweight applications, recycled PET products, next-generation aerogel technology and passive fire protection systems.



For more information, please visit:
www.armacell.com