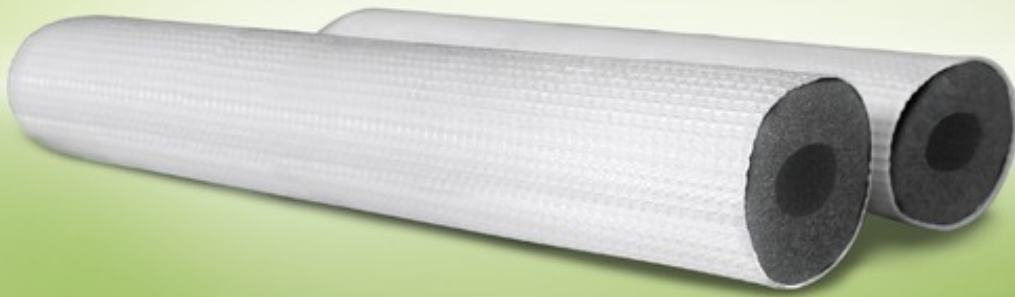


# Armaflex<sup>®</sup> ACE S

EASY SOLUTION FOR OUTDOOR  
APPLICATIONS



- Low maintenance and repair costs
- Easy cleaning of the product
- Built in vapour barrier

## Technical Data - Armaflex ACE S

Brief description	Highly flexible closed cell insulation material based on elastomeric foam, covered with a polyolefin copolymer coating. Especially designed for outside installations.
Material type	Synthetic NBR rubber based foam. Factory made flexible elastomeric foam (FEF) according to EN 14304. Covering: polyolefin- copolymer coating.
Colour	white / black (facing)
Applications	Thermal insulation for pipework in: heating and plumbing area
Remarks	Declaration of Performance is available in accordance with Article 7(3) of Regulation (EU) No 305/2011 on our homepage: <a href="http://www.armacell.com/DoP">www.armacell.com/DoP</a>

Property	Value/Assessment	Test <sup>*1</sup>	Super- vision <sup>*2</sup>	Special Remark		
<b>Temperature Range</b>						
Temperature Range	max. service temperature	+ 110 °C	EU 5796	o/●	Tested acc. to EN 14706, EN 14707 and EN 14304	
	min. service temperature <sup>1</sup>	-50 °C				
<b>Thermal Conductivity</b>						
Thermal Conductivity	$\vartheta_m$ +/-0 °C	$\lambda =$	EU 5796	o/●	Declared acc. to EN ISO 13787 Tested acc. to EN 12667 and EN ISO 8497	
	tubes $\lambda \leq 0,038$	W/(m · K)				$[38 + 0,1 \cdot \vartheta_m + 0,0008 \cdot \vartheta_m^2]/1000$
<b>Water vapour diffusion resistance</b>						
Water vapour diffusion resistance	$\mu$	$\geq$	7.000	EU 5796	o/●	Tested according to EN 13469
<b>Fire performance</b>						
Reaction to fire	Euroclass	E	EU 5796	o/●	Classified acc. to EN 13501-1 Tested acc. to EN ISO 11925-2	
Practical Fire Behaviour	Self-extinguishing, does not drip, does not spread flames					
<b>Other technical features</b>						
Dimensions and tolerances	In accordance with EN 14304, table 1		EU 5796	o/●	Tested acc. to EN 822, EN 823, EN 13467	
UV resistance <sup>2</sup>	very good		TB 142	o	Tested acc. to EN ISO 4892-2	

1. For temperatures below -50 °C please contact our Customer Service Center to request for the corresponding technical information.

2. In outdoor applications the colour may fade. This does not have any impact on the functionality of the covering or the insulation material.

\*1 Further documents such as test certificates, approvals and the like can be requested using the registration number given.

\*2 ●: Official supervision by independent institutes and /or test authorities  
o: Own in-factory quality monitoring

All data and technical information are based on results achieved under typical application conditions. Recipients of this information should, in their own interest and responsibility, clarify with us in due time whether or not the data and information apply to the intended application area. Installation instructions are available in our Armaflex installation manual. Please consult our Customer Service Center before insulating stainless steels. For temperatures above +110 °C please contact our Customer Service Centre to request the corresponding technical information.



