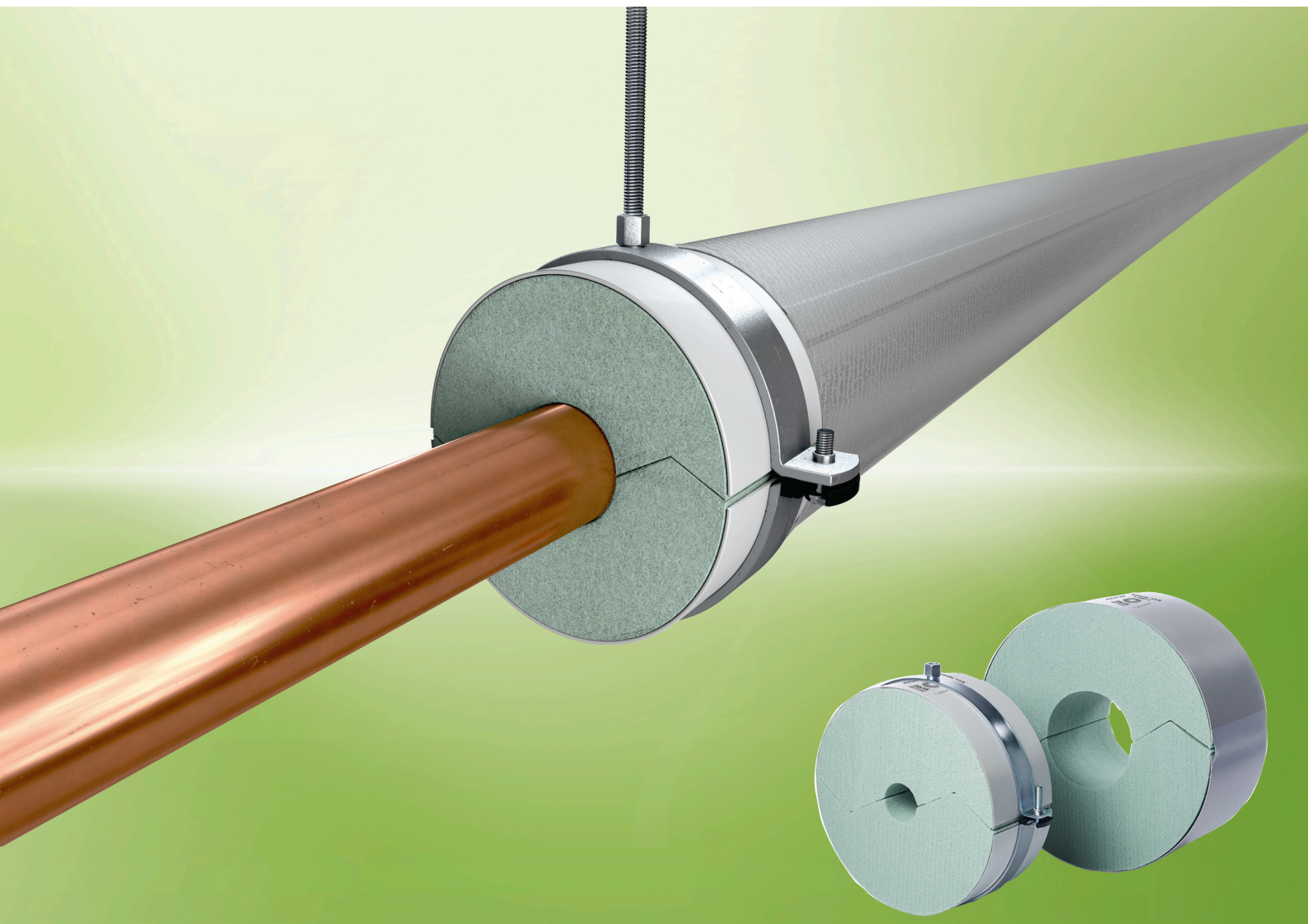


Armafix® VVS

THE ENVIRONMENT-FRIENDLY PIPE
SUPPORT



- Lightweight pipe support made of recycled and recyclable PET
- Aligned to the standard thicknesses of mineral wool
- Exceptional load-bearing properties
- Complies with European standards (Danish standard DS452) to prevent energy losses

WHY PIPE SUPPORTS ARE SO IMPORTANT

To prevent energy losses, pipe clamps must be insulated correctly. Professional pipe supports thermally isolate the pipe and its fixing from each other and thus prevent thermal bridging. Although the energy loss from an uninsulated pipe bracket is equivalent to the heat loss from up to 1 m of uninsulated pipe, in practice pipe brackets usually remain uninsulated.



ENVIRONMENT-FRIENDLY PET

Armafix VVS is made entirely out of the recycle of PET bottles, 100 % of production scrap flows back into the manufacturing of new PET blocks and these can be completely recycled at the end of their service life. PET has an excellent environmental performance: the material requires over 60 % less energy for its production than PUR and releases over 80 % less CO₂. PET made of recycle even goes one better: the product consumes 40 % less energy and causes 30 % less CO₂ emissions than conventional PET foams.



QUICK AND EASY TO INSTALL

A stamp on the pipe support indicates the applicable pipe dimension. The practical clamps have a easy-open function for fast assembly even in difficult installation situations.

Armafix VVS pipe supports are available in practical combination packs. These packs include our pipe supports with matching clamps.

LOCAL INFORMATION

e.g. Danish standard

Technical Data - Armafix VVS

Brief description	Pipe and duct support for heating and plumbing installations to prevent heat losses at fixing points. Two ArmaFORM PET foam sections fixed with a tape.
Material type	PET- foam stand alone bearing segments. Outside bearing shells made of grey painted aluminium sheeting 0.8mm thick, which simultaneously serves as a vapour barrier for the PET bearing segments.
Colour	grey
Applications	Mounting aid for heating and plumbing applications, insulated with mineral fibre.

Property	Value/Assessment				Super- vision ^{*1}	Special Remark
Temperature Range						
Temperature Range	max. service temperature		+ 110 °C		○	Tested acc. to EN 14706, EN 14707
	min. service temperature ¹		as usual in heating and plumbing systems			
Thermal Conductivity						
Thermal Conductivity	ϑ _m		23 °C		○	Declared acc. to EN ISO 13787 Tested acc. to EN 12667 EN ISO 8497
	PET Foam	λ ≤	0,034 W/(m · K)			
Fire performance						
Reaction to fire	Euroclass E				○	Classified acc. to EN 13501-1 Tested acc. to EN 13823 EN ISO 11925-2
Other technical features						
Density	100 kg/m³				○	Tested acc. to EN ISO 845
Shear strength	0.75 MPa				○	Tested acc. to ISO 1922
Tensile strength	2.4 MPa				○	Tested acc. to ASTM C 297
Compression strength	1.5 MPa				○	Tested acc. to EN ISO 844
Storage & Shelf life	Products with self adhesive closures to be installed within 1 year.					Can be stored in dry, clean rooms at normal relative humidity (50% to 70%) and ambient temperature (0 °C – 35 °C).

1. For further information, please contact our customer service.

*1 ●: Official supervision by independent institutes and /or test authorities
○: Own in-factory quality monitoring

All data and technical information are based on results achieved under typical application conditions. Recipients of this information should, in their own interest and responsibility, promptly clarify with us to determine whether or not the data and information apply to the intended application area.
Installation instructions are available in our Armaflex installation manual. Please consult our Customer Service Center before insulating stainless steels. Adhesive Armaflex 520 must be used to guarantee proper installation. For some refrigerants, the discharge temperature may exceed +110 °C; please consult our Customer Service Center for further information. For outside use, Armaflex should be protected within 3 days, e.g. with Armafinish 99 Paint or Arma-Chek covering.

Armafix VVS pipe supports combi pack



Pipe max. Outside-Ø [mm]	20,0 mm insulation thickness			30,0 mm insulation thickness		
	Max. permissible distance [m]	Code	Pieces/carton	Max. permissible distance [m]	Code	Pieces/carton
15	2,00	VVS-20-015	24	2,00	VVS-30-015 ●	18
18	2,00	VVS-20-018	24	2,00	VVS-30-018	18
22	2,00	VVS-20-022	18	2,00	VVS-30-022	18
28	3,00	VVS-20-028	18	3,00	VVS-30-028	18
35	3,00	VVS-20-035	18	3,00	VVS-30-035	18
42	3,00	VVS-20-042	18	3,00	VVS-30-042 ●	12
48	4,00	VVS-20-048 ●	18	4,00	VVS-30-048 ●	12
54	4,00	VVS-20-054 ●	18	4,00	VVS-30-054 ●	12
60	4,00	VVS-20-060 ●	12	4,00	VVS-30-060 ●	12
76	-	-	-	5,00	VVS-30-076 ●	12
89	-	-	-	6,00	VVS-30-089 ●	12
102	-	-	-	6,00	VVS-30-102 ●	6
108	-	-	-	6,00	VVS-30-108 ●	6
114	-	-	-	6,00	VVS-30-114 ●	6

Pipe max. Outside-Ø [mm]	40,0 mm insulation thickness			50,0 mm insulation thickness		
	Max. permissible distance [m]	Code	Pieces/carton	Max. permissible distance [m]	Code	Pieces/carton
15	2,00	VVS-40-015 ●	24	-	-	-
18	2,00	VVS-40-018	18	-	-	-
22	2,00	VVS-40-022	18	2,00	VVS-50-022	6
28	3,00	VVS-40-028	12	3,00	VVS-50-028	6
35	3,00	VVS-40-035	12	3,00	VVS-50-035	6
42	3,00	VVS-40-042	6	3,00	VVS-50-042 ●	6
48	4,00	VVS-40-048 ●	6	4,00	VVS-50-048 ●	4
54	4,00	VVS-40-054	6	4,00	VVS-50-054 ●	4
60	4,00	VVS-40-060	6	4,00	VVS-50-060 ●	4
76	5,00	VVS-40-076 ●	4	5,00	VVS-50-076	2
89	6,00	VVS-40-089 ●	4	6,00	VVS-50-089	2
114	6,00	VVS-40-114 ●	2	6,00	VVS-50-114 ●	2

Pipe max. Outside-Ø [mm]	60,0 mm insulation thickness			70,0 mm insulation thickness		
	Max. permissible distance [m]	Code	Pieces/carton	Max. permissible distance [m]	Code	Pieces/carton
28	3,00	VVS-60-028	6	-	-	-
35	3,00	VVS-60-035	6	3,00	VVS-70-035	4
42	3,00	VVS-60-042 ●	6	3,00	VVS-70-042 ●	4
48	4,00	VVS-60-048 ●	6	4,00	VVS-70-048 ●	2
54	4,00	VVS-60-054 ●	6	4,00	VVS-70-054 ●	2
60	4,00	VVS-60-060 ●	4	4,00	VVS-70-060 ●	2
76	5,00	VVS-60-076 ●	2	5,00	VVS-70-076 ●	2
89	6,00	VVS-60-089 ●	2	6,00	VVS-70-089 ●	2
102	6,00	VVS-60-102 ●	2	-	-	-
108	6,00	VVS-60-108 ●	2	-	-	-
114	6,00	VVS-60-114 ●	2	-	-	-

Pipe max. Outside-Ø [mm]	80,0 mm insulation thickness					
	Max. permissible distance [m]	Code	Pieces/carton			
42	3,00	VVS-80-042 ●	2	-	-	-
48	4,00	VVS-80-048 ●	2	-	-	-
54	4,00	VVS-80-054 ●	2	-	-	-
76	5,00	VVS-80-076 ●	2	-	-	-

● Item not in stock. Delivery on request. [MTO]

