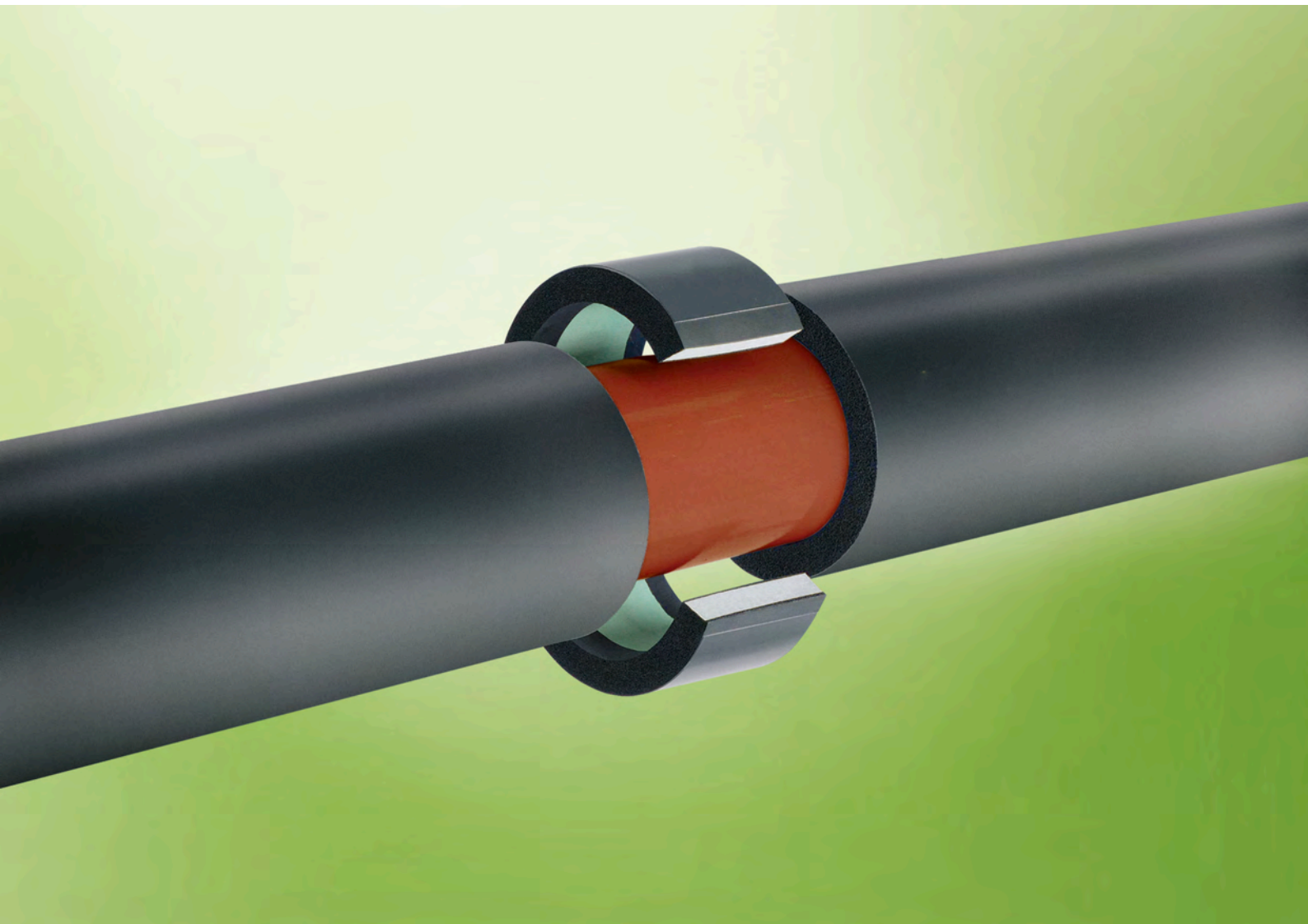




ARMAFIX NH

THE UNIQUE HALOGEN-FREE PIPE  
SUPPORT



- Prevents condensation and saves energy
- Load-bearing segments made of recycled and recyclable PET
- High system security in combination with NH/ Armaflex



## Technical Data - Armafix NH

Brief description	Pipe support for refrigeration and air-conditioning installations to prevent condensation at fixing points. Thermally non-interacting single piece, with 2 ArmaFORM PET-foam sections and self-adhesive closure. All dimensions are matching the NH/Armaflex range.
Material type	PET-foam bearing segments, embedded in and glued to NH/Armaflex elastomeric foam material. Outside bearing shells made of painted aluminium sheeting 0.8mm thick, which simultaneously serves as a vapour barrier for the PET bearing segments.
Colour	dark grey
Material Special Information	Traces of silicon can be found on protection paper/foil used to protect self-adhesive closures.
Applications	Thermally non-interacting mounting aid for tubes/sheets in refrigeration and air-conditioning applications, which are to be insulated with NH/Armaflex.
Remarks	When used in installations with intermittent temperatures, thermal length extensions may cause inherent pressure in the installation; this needs to be considered in the overall insulation construction.

Property	Value/Assessment	Special Remark
<b>Temperature Range</b>		
Temperature Range <sup>1</sup>	max. service temperature	+ 110 °C
	min. service temperature	-50 °C
<b>Thermal Conductivity</b>		
Thermal Conductivity	Same as NH/Armaflex.	Declared acc. to EN ISO 13787 Tested acc. to EN 12667 EN ISO 8497
<b>Water vapour diffusion resistance</b>		
Water vapour diffusion resistance	Same as NH/Armaflex.	Tested acc. to EN 12086 and EN 13469
<b>Fire performance</b>		
Reaction to fire	Euroclass	E
	Entire System with NH/Armaflex tubes	D <sub>L</sub> -s2, d0
Practical Fire Behaviour	Self extinguishing, does not drip, does not spread flames.	
<b>Acoustic Performance</b>		
Reduction of structure-borne sound transmission	According to used insulation layer in clamp / pipe fastener	According to DIN 4109
<b>Other technical features</b>		
Density	95 - 105 kg/m <sup>3</sup> (pipe bearing segments)	
Storage & Shelf life	Products with self adhesive closures to be installed within 3 year.	Can be stored in dry, clean rooms at normal relative humidity (50% to 70%) and ambient temperature (0 °C – 35 °C).

1. For temperatures below -50 °C please contact our Customer Service Center to request for the corresponding technical information.

All data and technical information are based on results achieved under typical application conditions. Recipients of this information should, in their own interest and responsibility, promptly clarify with us to determine whether or not the data and information apply to the intended application area.  
Installation instructions are available in our Armaflex installation manual. Please consult our Customer Service Center before insulating stainless steels. Adhesive Armaflex 520 must be used to guarantee proper installation. For some refrigerants, the discharge temperature may exceed +110 °C; please consult our Customer Service Center for further information. For outside use, Armaflex should be protected within 3 days, e.g. with Armafinish 99 Paint or Arma-Chek covering.

## Technical Data - Armafix Clamps

Brief description	Pipe clamp with a quick release and a combination nut for mounting.
Material type	Steel with an electrolytic zinc coating which protects the clamp from the corrosion.
Colour	silver
Material Special Information	The clamps are supplied with a nut for fixing.
Applications	Where thermal bridging should be avoided in refrigeration and air-conditioning installations, which are intended to be insulated with appropriate Armaflex type and Armafix pipe-hanger.

Property	Value/Assessment
<b>Fire performance</b>	
Other	No insulation layer in clamp / pipe fastener to affect fire performance of the clamp itself.
<b>Other technical features</b>	
Screw connections	M 8 / M 10 combination nut
Tension screws	M 6 and M 8
Clamp	Width 20 to 30 mm; Thickness 1,5 to 3,0 mm

All data and technical information are based on results achieved under typical application conditions. Recipients of this information should, in their own interest and responsibility, clarify with us in due time whether or not the data and information apply to the intended application area.

## Armafix NH pipe supports and clamps



Pipe max. Outside-Ø [mm]	Armaflex tube nom. Ø [mm]	Max. permissible distance [m]	13,0 mm insulation thickness				Clamps 13,0 mm	
			Code	Outer- Ø [mm]	Length [mm]	Pieces/carton	Code	Pieces/carton
10	10	2,00	PHN-13-10/12 ●	34	50	32	PCX 025/030	25
12	10	2,00	PHN-13-10/12 ●	34	50	32	PCX 025/030	25
15	10	2,00	PHN-13-10/12 ●	34	50	32	PCX 025/030	25
15	15	2,00	PHN-13-15/18 ●	39	50	32	PCX 033/037	25
18	15	2,00	PHN-13-15/18 ●	39	50	32	PCX 033/037	25
22	22	2,75	PHN-13-22/25 ●	45	50	32	PCX 042/046	25
25	22	2,75	PHN-13-22/25 ●	45	50	32	PCX 042/046	25
28	28	3,00	PHN-13-28/30 ●	50	50	32	PCX 047/052	25
30	28	3,00	PHN-13-28/30 ●	50	50	32	PCX 047/052	25
32	-	3,50	PHN-13-32 ●	54	50	28	PCX 047/052	25
35	35	3,50	PHN-13-35/38 ●	58	55	28	PCX 054/058	25
38	35	3,50	PHN-13-35/38 ●	58	55	28	PCX 054/058	25
40	-	3,75	PHN-13-40 ●	62	55	28	PCX 059/063	25
42	42	3,75	PHN-13-42/45 ●	66	55	28	PCX 063/068	25
45	42	3,75	PHN-13-42/45 ●	66	55	28	PCX 063/068	25
48	48	4,25	PHN-13-48 ●	72	60	28	PCX 068/073	10
54	54	4,25	PHN-13-54/57 ●	78	60	28	PCX 068/073	10
57	54	4,25	PHN-13-54/57 ●	78	60	28	PCX 068/073	10
60	60	4,75	PHN-13-60/64 ●	84	70	24	PCX 082/085	10
64	60	4,75	PHN-13-60/64 ●	84	70	24	PCX 082/085	10
76	76	5,50	PHN-13-76/80 ●	99	80	20	PCX 092/099	10
80	76	5,50	PHN-13-76/80 ●	99	80	20	PCX 092/099	10
89	89	6,00	PHN-13-89 ●	112	100	16	PCX 108/112	10
102	-	6,00	PHN-13-102/108 ● <sup>1</sup>	125	100	16	PCX 125/130	10
108	-	6,00	PHN-13-102/108 ● <sup>1</sup>	125	100	16	PCX 125/130	10
114	-	6,00	PHN-13-110/114 ● <sup>1</sup>	133	120	12	PCX 133/137	10
125	-	6,00	PHN-13-125 ● <sup>1</sup>	148	120	12	PCX 145/152	10
133	-	6,00	PHN-13-133/140 ● <sup>1</sup>	156	120	12	PCX 153/160	10
140	-	6,00	PHN-13-133/140 ● <sup>1</sup>	156	120	12	PCX 153/160	10

# Armafix NH pipe supports and clamps



Pipe max. Outside-Ø [mm]	Armaflex tube nom. Ø [mm]	Max. permissible distance [m]	19,0 mm insulation thickness				Clamps 19,0 mm	
			Code	Outer- Ø [mm]	Length [mm]	Pieces/carton	Code	Pieces/carton
10	10	2,00	PHN-19-10/12 ●	45	60	28	PCX 038/041	25
12	10	2,00	PHN-19-10/12 ●	45	60	28	PCX 038/041	25
15	10	2,00	PHN-19-10/12 ●	45	60	28	PCX 038/041	25
15	15	2,00	PHN-19-15/18 ●	50	60	28	PCX 047/052	25
18	15	2,00	PHN-19-15/18 ●	50	60	28	PCX 047/052	25
20	-	2,75	PHN-19-20 ●	53	60	28	PCX 047/052	25
22	22	2,75	PHN-19-22/25 ●	56	60	28	PCX 054/058	25
25	22	2,75	PHN-19-22/25 ●	56	60	28	PCX 054/058	25
25	-	3,00	PHN-19-26 ●		60	28	PCX 059/063	25
28	28	3,00	PHN-19-28/30 ●	61	60	28	PCX 059/063	25
30	28	3,00	PHN-19-28/30 ●	61	60	28	PCX 059/063	25
32	-	3,50	PHN-19-32 ●	65	60	28	PCX 059/063	25
35	35	3,50	PHN-19-35/38 ●	69	70	24	PCX 063/068	25
38	35	3,50	PHN-19-35/38 ●	69	70	24	PCX 063/068	25
40	-	3,75	PHN-19-40 ●	73	70	24	PCX 068/073	10
42	42	3,75	PHN-19-42/45 ●	77	70	24	PCX 068/073	10
45	42	3,75	PHN-19-42/45 ●	77	70	24	PCX 068/073	10
48	48	4,25	PHN-19-48 ●	83	70	24	PCX 072/080	10
54	54	4,25	PHN-19-54/57 ●	89	70	24	PCX 082/085	10
57	54	4,25	PHN-19-54/57 ●	89	70	24	PCX 082/085	10
60	60	4,75	PHN-19-60/64 ●	95	80	20	PCX 088/092	10
64	60	4,75	PHN-19-60/64 ●	95	80	20	PCX 088/092	10
76	76	5,50	PHN-19-76/80 ●	110	90	16	PCX 099/103	10
80	76	5,50	PHN-19-76/80 ●	110	90	16	PCX 099/103	10
89	89	6,00	PHN-19-89 ●	123	105	12	PCX 112/118	10
102	-	6,00	PHN-19-102/108 ● <sup>1</sup>	136	105	12	PCX 133/137	10
108	-	6,00	PHN-19-102/108 ● <sup>1</sup>	136	105	12	PCX 133/137	10
114	-	6,00	PHN-19-110/114 ● <sup>1</sup>	144	120	12	PCX 137/142	10
125	-	6,00	PHN-19-125 ● <sup>1</sup>	159	120	12	PCX 164/169	10
133	-	6,00	PHN-19-133/140 ● <sup>1</sup>	167	120	12	PCX 164/169	10
140	-	6,00	PHN-19-133/140 ● <sup>1</sup>	167	120	12	PCX 164/169	10
160	-	6,00	PHN-19-160 ● <sup>1</sup>	193	120	6	PCX 206	10
165	-	6,00	PHN-19-165/168 ● <sup>1</sup>	199	130	6	PCX 206	10
168	-	6,00	PHN-19-165/168 ● <sup>1</sup>	199	130	6	PCX 206	10
216	-	6,00	PHN-19-216/219 ● <sup>1</sup>	252	170	4	-	-
219	-	6,00	PHN-19-216/219 ● <sup>1</sup>	252	170	4	-	-

# Armafix NH pipe supports and clamps



Pipe max. Outside-Ø [mm]	Armaflex tube nom. Ø [mm]	Max. permissible distance [m]	25,0 mm insulation thickness				Clamps 25,0 mm	
			Code	Outer- Ø [mm]	Length [mm]	Pieces/carton	Code	Pieces/carton
15	-	2,00	PHN-25-14 ●	61	60	28	PCX 054/058	25
15	15	2,00	PHN-25-15/18 ●	63	60	28	PCX 059/063	25
18	15	2,00	PHN-25-15/18 ●	63	60	28	PCX 059/063	25
20	-	2,75	PHN-25-20 ●	66	60	28	PCX 063/068	25
22	22	2,75	PHN-25-22/25 ●	69	60	28	PCX 063/068	25
25	22	2,75	PHN-25-22/25 ●	69	60	28	PCX 063/068	25
25	-	3,00	PHN-25-26 ●		60	28	PCX 068/073	10
28	28	3,00	PHN-25-28/30 ●	74	60	28	PCX 068/073	10
30	28	3,00	PHN-25-28/30 ●	74	60	28	PCX 068/073	10
32	-	3,50	PHN-25-32 ●	78	60	24	PCX 068/073	10
35	35	3,50	PHN-25-35/38 ●	81	70	24	PCX 072/080	10
38	35	3,50	PHN-25-35/38 ●	81	70	24	PCX 072/080	10
40	-	3,75	PHN-25-40 ●	86	70	24	PCX 082/085	10
42	42	3,75	PHN-25-42/45 ●	90	70	24	PCX 082/085	10
45	42	3,75	PHN-25-42/45 ●	90	70	24	PCX 082/085	10
48	48	4,25	PHN-25-48 ●	96	70	24	PCX 088/092	10
54	54	4,25	PHN-25-54/57 ●	102	70	24	PCX 092/099	10
57	54	4,25	PHN-25-54/57 ●	102	70	24	PCX 092/099	10
60	60	4,75	PHN-25-60/64 ●	108	80	20	PCX 099/103	10
64	60	4,75	PHN-25-60/64 ●	108	80	20	PCX 099/103	10
76	76	5,50	PHN-25-76/80 ●	123	90	16	PCX 112/118	10
80	76	5,50	PHN-25-76/80 ●	123	90	16	PCX 112/118	10
89	89	6,00	PHN-25-89 ●	136	105	12	PCX 137/142	10
102	-	6,00	PHN-25-102/108 ● <sup>1</sup>	149	105	12	PCX 137/142	10
108	-	6,00	PHN-25-102/108 ● <sup>1</sup>	149	105	12	PCX 137/142	10
114	-	6,00	PHN-25-110/114 ● <sup>1</sup>	157	120	12	PCX 159/164	10
125	-	6,00	PHN-25-125 ● <sup>1</sup>	172	120	12	PCX 164/169	10
133	-	6,00	PHN-25-133/140 ● <sup>1</sup>	180	120	12	PCX 190	10
140	-	6,00	PHN-25-133/140 ● <sup>1</sup>	180	120	12	PCX 190	10
160	-	6,00	PHN-25-160 ● <sup>1</sup>	206	120	6	PCX 206	10
165	-	6,00	PHN-25-165/168 ● <sup>1</sup>	212	130	6	PCX 222	10
168	-	6,00	PHN-25-165/168 ● <sup>1</sup>	212	130	6	PCX 222	10
180	-	6,00	PHN-25-180 ● <sup>1</sup>	224	150	4	-	-
204	-	6,00	PHN-25-204 ● <sup>1</sup>	250	170	4	-	-
216	-	6,00	PHN-25-216/219 ● <sup>1</sup>	265	170	4	-	-
219	-	6,00	PHN-25-216/219 ● <sup>1</sup>	265	170	4	-	-
254	-	6,00	PHN-25-254 ● <sup>1</sup>	296	170	3	-	-
267	-	6,00	PHN-25-267/273 ● <sup>1</sup>	313	170	3	-	-
273	-	6,00	PHN-25-267/273 ● <sup>1</sup>	313	170	3	-	-
306	-	6,00	PHN-25-306 ● <sup>1</sup>	351	215	1	-	-
406	-	4,20	PHN-25-406 ● <sup>2,1</sup>	445	215	6	-	-

## Armafix NH pipe supports and clamps



Pipe max. Outside-Ø [mm]	Armaflex tube nom. Ø [mm]	Max. permissible distance [m]	32,0 mm insulation thickness				Clamps 32,0 mm	
			Code	Outer- Ø [mm]	Length [mm]	Pieces/carton	Code	Pieces/carton
10	10	2,00	PHN-32-10/12 ●	75	90	20	-	-
12	10	2,00	PHN-32-10/12 ●	75	90	20	-	-
15	15	2,00	PHN-32-15/18 ●	81	90	20	-	-
18	15	2,00	PHN-32-15/18 ●	81	90	20	-	-
22	22	2,75	PHN-32-22/25 ●	88	90	20	-	-
25	22	2,75	PHN-32-22/25 ●	88	90	20	-	-
28	28	3,00	PHN-32-28/30 ●	93	90	20	-	-
30	28	3,00	PHN-32-28/30 ●	93	90	20	-	-
35	35	3,50	PHN-32-35/38 ●	101	90	16	-	-
38	35	3,50	PHN-32-35/38 ●	101	90	16	-	-
42	42	3,75	PHN-32-42/45 ●	108	90	16	-	-
45	42	3,75	PHN-32-42/45 ●	108	90	16	-	-
60	60	4,75	PHN-32-60/64 ●	127	105	12	-	-
64	60	4,75	PHN-32-60/64 ●	127	105	12	-	-
76	76	5,50	PHN-32-76/80 ●	143	120	12	-	-
80	76	5,50	PHN-32-76/80 ●	143	120	12	-	-
89	89	6,00	PHN-32-89 ●	152	130	12	-	-
110		6,00	PHN-32-110/114 ●	177	150	12	-	-
114		6,00	PHN-32-110/114 ●	177	150	12	-	-
133		6,00	PHN-32-133/140 ●	203	150	8	-	-
140		6,00	PHN-32-133/140 ●	203	150	8	-	-
165		6,00	PHN-32-165/168 ●	231	170	5	-	-
168		6,00	PHN-32-165/168 ●	231	170	5	-	-

### Remark

Armafix NH are no stock items. Delivery time on request.  
outer Ø = installation Ø

### Technical properties

Other sizes likewise on request. Starting from Ø 165,1 mm two-piece execution possible. PH measurements are approx. Measurements.

- Item not in stock. Delivery on request. [MTO]

<sup>1</sup> Sheets

<sup>2</sup> Pieces/carton on request



Clamps	
Code	Pieces/carton
PCX 025/030	25
PCX 033/037	25
PCX 038/041	25
PCX 042/046	25
PCX 047/052	25
PCX 054/058	25
PCX 059/063	25
PCX 063/068	25
PCX 068/073	10
PCX 072/080	10
PCX 082/085	10
PCX 088/092	10
PCX 092/099	10
PCX 099/103	10
PCX 108/112	10
PCX 112/118	10
PCX 125/130	10
PCX 133/137	10
PCX 137/142	10
PCX 145/152	10
PCX 153/160	10
PCX 159/164	10
PCX 164/169	10
PCX 168/173	10
PCX 190	10
PCX 199	10
PCX 206	10
PCX 222	10
PCX 231	10
PCX 249	10
PCX 259	10