

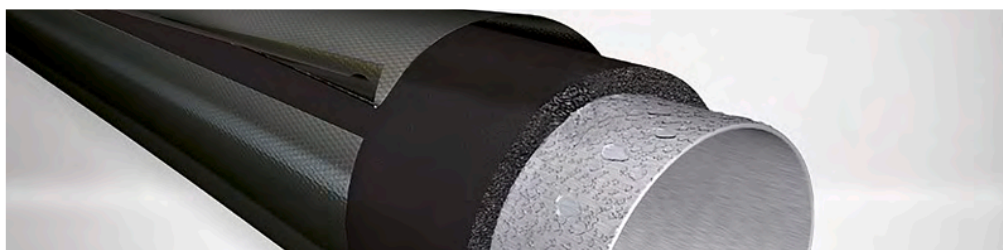
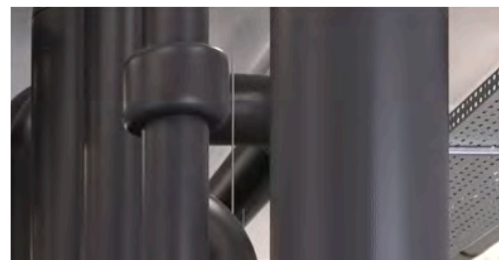


INSTALL IT. SAFEGUARD YOUR EQUIPMENT.

# Arma-Chek Juna

Durable protection on the high seas

- // IMO-certified insulation system for shipbuilding
- // Pre-covered flexible insulation system with black aluminium facing
- // Can be used on combustible and non-combustible pipes
- // Thin wall thicknesses due to very high surface emissivity factor



 **armacell**<sup>®</sup>  
ArmaClad<sup>™</sup>

INSTALL IT. SAFEGUARD YOUR EQUIPMENT.

# Arma-Chek Juna

## THE COST-EFFICIENT ONE-STEP SOLUTION

Technical installations which are subject to mechanical stress should be covered to protect them against damage. Armacell's flexible covering systems not only provide tough protection against weathering, mechanical impact and corrosion under insulation (CUI), but also save time and money. Unlike traditional insulation materials and coverings, the precovered products can be installed in a single step. Arma-Chek Juna is UV-resistant and can be installed on combustible and non-combustible pipes.

### // Optimal strength-to-weight ratio

The flexible incombustible covering is made of fibreglass fabric laminated with black aluminium. Thanks to its low bulk density and outstanding tear strength, Arma-Chek Juna is predestined for covering elastomeric and other insulation materials used in marine applications. In combination with ArmaFlex insulation it offers a perfect strength-to-weight ratio. Ships equipped with Armacell's lightweight solutions are less expensive to operate due to lower fuel demands.



### // Highly flexible and space saving

Due to its high flexibility Arma-Chek Juna ensures easy installation even in tight spaces on board vessels. What's more, compared to aluminium-clad insulation the lightweight product allows space-saving installation. As the black surface of the covering is highly absorptive, thinner insulation thicknesses can be specified. The emissivity factor indicates the relative ability of a material to emit energy by radiation. The higher this factor, the smaller the insulation thickness needed. When a bright shiny surface is used, the wall thickness of the insulation has to be increased significantly.

### // Ideal solution for python beverage tubing

Pythons are now state of the art for supplying beverages at low temperatures. They consist of a bundle of plastic tubes and cooling lines encased in insulation. The ArmaFlex insulation ensures that the desired medium temperature is maintained and prevents energy losses and condensation. The Arma-Chek Juna covering protects the surface of the python against mechanical impact, thus ensuring a long service life for the equipment.

## TECHNICAL DATA - ARMA-CHEK JUNA

Brief description	Arma-Chek Juna innovative covering is, thanks to its low bulk density and outstanding tear strength, predestined for covering elastomeric insulations or other material types used in the ship industry. Arma-Chek Juna in combination with ArmaFlex insulation can be used on combustible and non-combustible substrates.
Material type	Highly flexible closed-cell elastomeric foam material based on synthetic rubber. Covering: made of fiberglass fabrics laminated with black coloured aluminium facing.
Product colour range	Black foam with black covering
Product range	Arma-Chek Juna is available in a range of pre-covered tubes & sheets, as well as single covering.
Applications	Insulation and mechanical protection on cold service pipework/fittings for refrigeration systems everywhere onboard, and for pipework, fittings, air ducts and tanks insulation in cargo areas, mail rooms, baggage rooms and refrigerated compartments of service spaces, and exterior locations.
Installation	The ArmaFlex and ArmaClad Arma-Chek installation manuals should be consulted before assembly. We offer special installation courses for the application of ArmaClad Arma-Chek. Certified and compatible adhesive for a long-term performing system is ArmaFlex 520.
Remarks	Rough handling of the material can cause puckering on the surface. Creases and micro-cracks of the surface don't affect the functional properties of the covering.

Property	Value / Assessment	Standard / Test method
<b>Temperature range</b>		
Service temperature	Min. °C	Max. °C <sup>1</sup>
	-50	110
	Remarks	+550 °C for the jacketing.
<b>Thermal conductivity</b>		
Remarks	Depends on ArmaFlex substrate.	EN ISO 13787, EN 12667, EN ISO 8497
<b>Fire Performance and Approvals</b>		
Surface flammability <sup>2</sup>	Pre-covered products: low-flammable - 2010 FTP-Code (MED 96/98/EC, Module D) Covering : low-flammable - 2010 FTP-Code (MED 96/98/EC, Module D)	IMO 2010 FTP Code, Part 5
<b>Fire performance</b>		
Practical fire behaviour	Self-extinguishing, does not drip, does not spread flames	
<b>Resistance to water vapour</b>		
Water vapour diffusion resistance factor	depends on used Armaflex material	EN 12667, EN 13469
<b>Physical attributes</b>		
Thickness	approx. 240 µm (0,24 mm)	EN 2286
<b>Mechanical properties</b>		
Resistance to mechanical impact	Good puncture and tear resistance.	
<b>Weather and UV resistance</b>		
UV resistance <sup>3</sup>	excellent	
<b>Other technical features</b>		
Shelf life	Tape, self-adhesive: 1 year	
Storage	Can be stored in dry, clean rooms at normal relative humidity (50% to 70%) and ambient temperature (0 °C – 35 °C).	

<sup>1</sup>+85 °C, for products with a self-adhesive layer.

<sup>2</sup>According to IMO 2010 FTP Code annex 2, clause 2.2 a fire technical test for smoke density and toxicity is not necessary.

<sup>3</sup>In outdoor applications the colour may fade. This does not have any impact on the functionality of the covering or the insulation material.

## Sheet – standard. FEF: black / anthracite Covering: black. 2m length

Item	Insulation thickness [mm]	EAN	Content [metric]
AFJ-13MM	13	7612207461107	9 m <sup>2</sup>
AFJ-19MM	19	7612207461190	7 m <sup>2</sup>
AFJ-25MM	25	7612207461206	5 m <sup>2</sup>
AFJ-32MM	32	7612207461213	4 m

## Covering. Black

Item	Width [mm]	Length [m]	EAN	Content [metric]	Content [quantity]
AJ-COAT	980	50	7612207455243	49 m <sup>2</sup>	1 roll

## Tape – self-adhesive. Black. For beverage pipes

Item	Thickness [mm]	Width [mm]	Length [m]	Content [quantity]
AJ-TAPE75-P	0,30	75,0	50	8 piece

## Tape – self-adhesive. Black

Item	Thickness [mm]	Width [mm]	Length [m]	Content [quantity]
AJ-TAPE50	0,05	50,0	50	6 piece

## Accessories

Item	Description	Content [quantity]
ADH520/1,0E	1.0 litre tins of ArmaFlex 520 adhesive packed in a carton.	12 tin
ADH520/0,5E	0.5 litre tins of ArmaFlex 520 adhesive packed in a carton.	12 tin
ACH-MASTICD	Black mastic. Sealing compound for installing Arma-Chek outdoors. 290 ml per piece.	12 piece