

# ARMALOK INSTALLATION INFORMATION



Open the pipe shell and place around the pipe which is to be insulated.



Press the longitudinal joint together, peel off the protective strip of the closure and press the adhesive tape down firmly. **The surfaces to be bonded must be dry and free of dust or grease.**



To minimise heat losses, when installing horizontally ensure that the longitudinal seam is located on the underside of the pipe (at 6 o'clock). \* Secure the butt joints of the pipe shell with suitable adhesive tape.

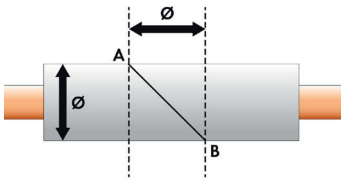


Alternatively, the overlap of the longitudinal seam should be fastened with rivets. At ambient temperatures above +40 °C and on pipes which will not be accessible later, the seam should be additionally secured with plastic rivets (at least 5 per metre).



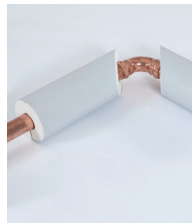
Finishing off the end of the pipe shell with an end capping ensures a tidy appearance. The end cappings are attached to the pipe shell using winding wire or adhesive tape.

## ANGLES AND T-PIECES:



**For 90° angles**, cut the pipe shell at an angle of 45° as follows, making sure that the longitudinal seam is on top.

In the middle of the pipe shell, make two parallel marks at a distance apart equal to the outer diameter of the insulation. Cut through the pipe shell diagonally from A to B.

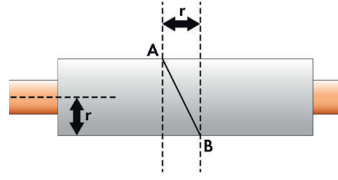


Turn one piece and install the two separate pieces on the pipe.



Seal the longitudinal seam with the self-adhesive overlap and the butt joints with suitable adhesive tape.

## ANGLES AND T-PIECES:



**For 45° angles**, cut the pipe shell at an angle of 22.5° as follows, making sure that the longitudinal seam is on top.

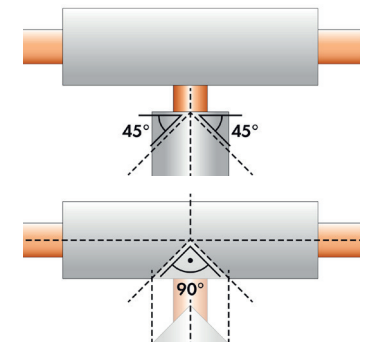
In the middle of the pipe shell, make two parallel marks at a distance apart equal to the radius of the insulation. Cut through the pipe shell diagonally from A to B. Seal the butt joints with suitable adhesive tape.



**For 90° angles**, ready-made, all-purpose elbows are also available.

Simple install and close the seams with suitable adhesive tape.

## ANGLES AND T-PIECES:



**For 90° T-pieces**, cut the pipe shell for the branch pipe at a 45° angle on each side of the centre line to form a point.

Then cut a 90° wedge out of the middle of the pipe shell for the main pipe. The width of the piece which has been cut out should correspond to the outer diameter of the pipe shell.



### EXPERT TIPS:

- Foil-covered pipe shell must not be continuously exposed to sunlight.
- All surfaces must be dry and free of dust or grease.
- In the cold season store pipe shell in a warm place before use to avoid surface condensation.
- Always start with pipe bends and T-pieces.
- Always seal joints tightly with suitable adhesive tape (Armalok self-adhesive tape).
- The installation temperature for the self-adhesive pipe shell and the matching adhesive tapes is +10 °C to +35 °C.
- Always overlap adhesive tapes!
- Armalok pipe shell are not suitable for outdoor use.

\* This prevents tensile stresses on the glued areas due to the weight of the pipe shell. Tensile stresses should always be prevented!